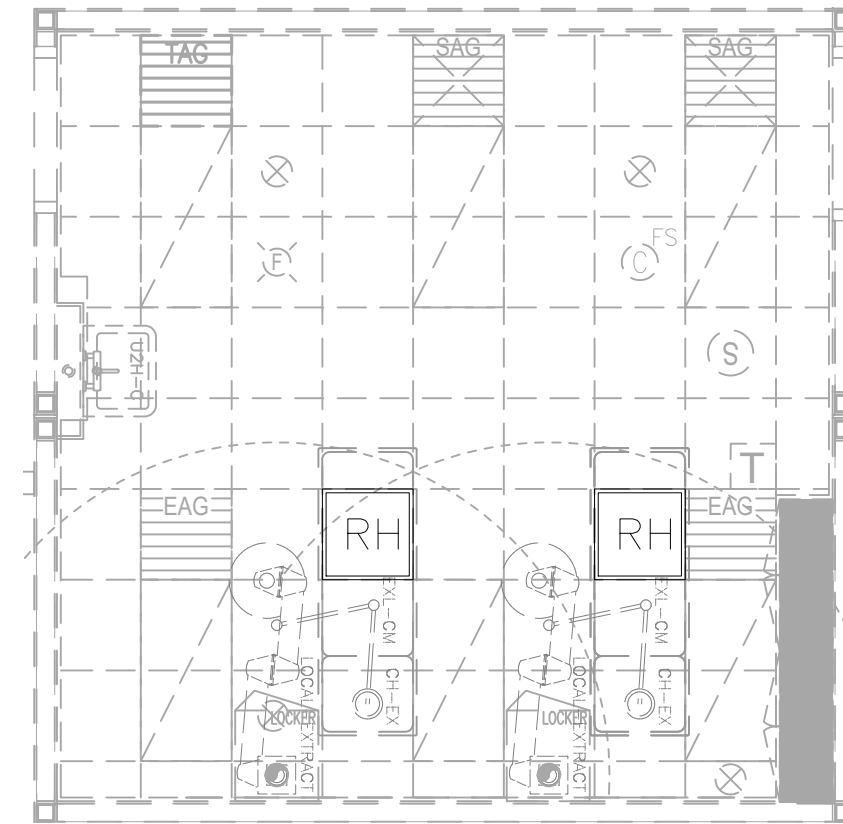
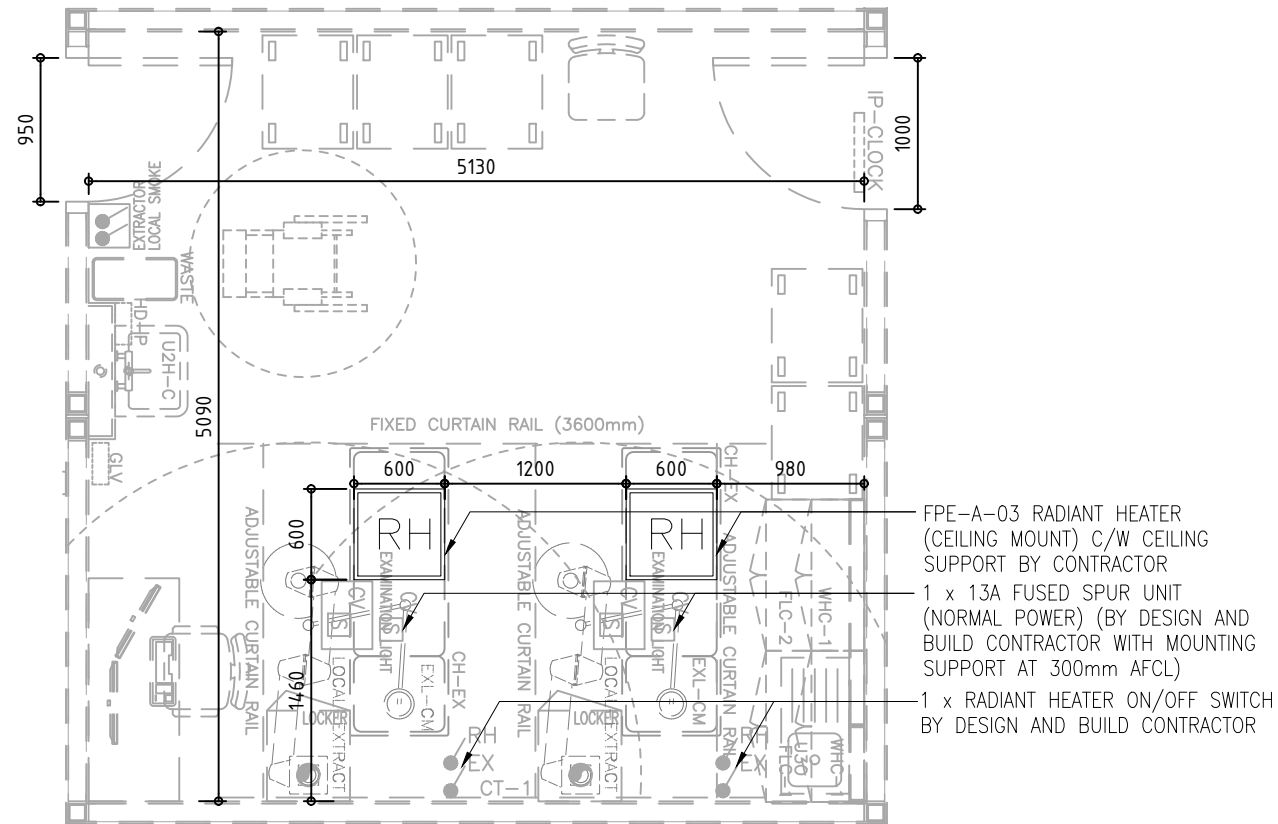


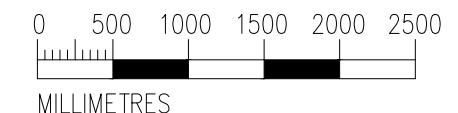
**Request for Market Information (“RFI”) for Supply, Delivery and Installation of Ceiling-mounted Radiant Heater - Appendix I**



**Ceiling-mounted Radiant Heater - For Reference only**

B1.3.12, B1.3.2(TYPE 1)  
G/F CM INTERVENTION CUM  
TEACHING ROOM (MOXIBUSTION)  
LAYOUT PLAN

B1.3.12, B1.3.2(TYPE 1)  
G/F CM INTERVENTION CUM  
TEACHING ROOM (MOXIBUSTION)  
REFLECTED CEILING PLAN



1 : 50

COMPOSITE DRAWING SUBMISSION

REVISIONS		
NUMBER	DESCRIPTION	DATE
0	FIRST SUBMISSION	JUL2022
1	SECOND SUBMISSION	NOV2022
2	THRD SUBMISSION	AUG2023
3	FORTH SUBMISSION	OCT2023
4	FIFTH SUBMISSION	JAN2024
5	SIXTH SUBMISSION	MAR2024

MAIN CONTRACTOR:  
中國建築工程(香港)有限公司  
CHINA STATE CONSTRUCTION ENGINEERING HONG KONG LIMITED

ARCHITECT  
王歐陽(香港)有限公司  
WONG & OUYANG (HK) LTD

STRUCTURAL ENGINEER  
SW

BUILDING SERVICES ENGINEER  
isp

LANDSCAPE DESIGNER  
ADI

INTERIOR DESIGNER  
V

MODULAR CONSTRUCTION DESIGNER  
中國建築建築科技有限公司  
CHINA STATE BUILDING CONSTRUCTION TECHNOLOGY COMPANY LIMITED

MEDICAL CONSULTANT  
中環國際醫藥產業發展有限公司  
CHINA STATE CONSTRUCTION INT'L MEDICAL INDUSTRY DEVELOPMENT CO. LTD.

CONTRACT NO.  
SS K514

PROGRAMME NO.  
001MZ & 116MH

PROJECT  
DESIGN AND CONSTRUCTION  
OF CHINESE MEDICINE  
HOSPITAL AND GOVERNMENT  
CHINESE MEDICINES TESTING  
INSTITUTE IN TSEUNG KWAN O

DRAWING TITLE  
COMPOSITE DRAWING OF  
RADIANT HEATER  
AT G/F LAYOUT PLAN  
(1 OF 5)

DRAWN BY: RW/XL DATE: MAR2024

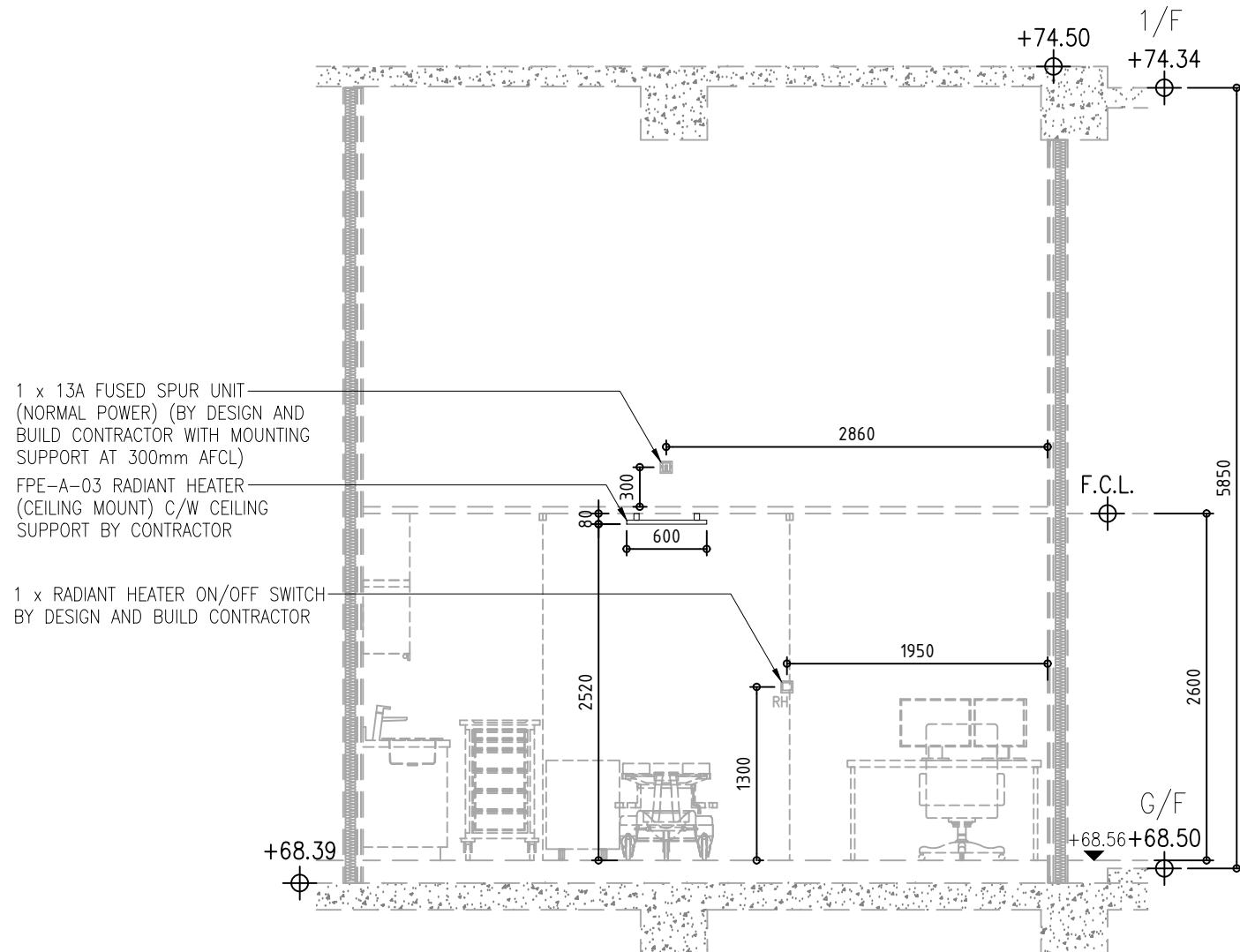
CHECKED BY: KT DATE: MAR2024

SCALE: 1:50 JOB NO.: BJY

DRAWING NUMBER: BS/8515/A/COM/FPE-A-03/2001 REV: 5

ARCHITECTURAL SERVICES DEPARTMENT

REVISIONS		
NUMBER	DESCRIPTION	DATE
0	FIRST SUBMISSION	JUL2022
1	SECOND SUBMISSION	NOV2022
2	THIRD SUBMISSION	AUG2023
3	FORTH SUBMISSION	OCT2023
4	FIFTH SUBMISSION	JAN2024
5	SIXTH SUBMISSION	MAR2024



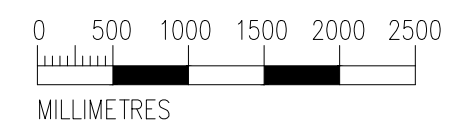
1 x 13A FUSED SPUR UNIT  
(NORMAL POWER) (BY DESIGN AND  
BUILD CONTRACTOR WITH MOUNTING  
SUPPORT AT 300mm AFCL)

FPE-A-03 RADIANT HEATER  
(CEILING MOUNT) C/W CEILING  
SUPPORT BY CONTRACTOR

1 x RADIANT HEATER ON/OFF SWITCH  
BY DESIGN AND BUILD CONTRACTOR

**Ceiling-mounted Radiant Heater - For Reference only**

TYPICAL ELEVATION A FOR FPE-A-03  
RADIANT HEATER (CEILING MOUNT)



1 : 50

**MAIN CONTRACTOR:**  
中國建築工程(香港)有限公司  
CHINA STATE CONSTRUCTION ENGINEERING (HONG KONG) LIMITED

**ARCHITECT:**  
王歐陽(香港)有限公司  
WONG & OUYANG (HK) LTD

**STRUCTURAL ENGINEER:**  
SW

**BUILDING SERVICES ENGINEER:**  
WSP

**LANDSCAPE DESIGNER:**  
ADI

**INTERIOR DESIGNER:**  
ADI

**MODULAR CONSTRUCTION DESIGNER:**  
中國建築建築科技有限公司  
CHINA STATE BUILDING CONSTRUCTION TECHNOLOGY COMPANY LIMITED

**MEDICAL CONSULTANT:**  
中環國際醫藥產業發展有限公司  
CHINA STATE CONSTRUCTION INT'L MEDICAL INDUSTRY DEVELOPMENT CO., LTD.

**CONTRACT NO.**  
SS K514

**PROGRAMME NO.**  
001MZ & 116MH

**PROJECT**  
DESIGN AND CONSTRUCTION  
OF CHINESE MEDICINE  
HOSPITAL AND GOVERNMENT  
CHINESE MEDICINES TESTING  
INSTITUTE IN TSEUNG KWAN O

**DRAWING TITLE**  
COMPOSITE DRAWING OF  
RADIANT HEATER  
TYPICAL ELEVATION PLAN

<b>DRAWN BY</b> RW/JL	<b>DATE</b> MAR2024
<b>CHECKED BY</b> KT	<b>DATE</b> MAR2024
<b>SCALE</b> 1:50	<b>JOB NO.</b> BJY
<b>DRAWING NUMBER</b> BS/8515/A/COM/FPE-A-03/9001	<b>REV</b> 5