

# Hong Kong's Domestic Health Accounts (DHA)

## A. ESTIMATES OF HEALTH EXPENDITURE: 1989/90 – 2018/19

### Summary results:

Based on the guidelines of *A System of Health Accounts 2011* (SHA 2011) published collaboratively by the Organisation for Economic Co-operation and Development (OECD), Eurostat and World Health Organization (WHO), the Food and Health Bureau has updated the estimates of health expenditure in Hong Kong to the position of fiscal year 2018/19.

The major trend and pattern in breakdown by financing scheme, provider and function are summarised below.

#### (a) Health expenditure ([Tables 1.1 – 1.2](#) and [Figures 1.1 – 1.2](#))

1. Total health expenditure amounted to \$177,447 million in 2018/19, with annual per capita spending at \$23,815.
2. From 1989/90 to 2018/19, total health expenditure rose at an average annual rate of 5.6% in real terms, faster than the corresponding increase of 3.7% in Gross Domestic Product (GDP) during the same period. As a result, total health expenditure as a percentage of GDP went up from 3.6% in 1989/90 to 6.2% in 2018/19.

#### (b) Health financing schemes ([Tables 2.1 – 2.4](#) and [Figures 2.1 – 2.5](#))

1. The increase in total health expenditure from 1989/90 to 2018/19 (390% cumulatively in real terms) was largely driven by the public health expenditure, which is increased by 521% cumulatively during the period, exceeding the increase of 301% for private health expenditure in the corresponding period.
2. The public share in total health expenditure went up from 40% in 1989/90 to 51% in 2018/19. Public health expenditure as a percentage of GDP increased from 1.5% to 3.2% during the same period.
3. The private share in total health expenditure went down from 60% in 1989/90 to 49% in 2018/19. Yet, private health expenditure as a percentage of GDP grew moderately from 2.2% to 3.0% during the period.
4. Analysed by financing scheme, 50% of the current health expenditure was paid via the government schemes, 32% was by household out-of-pocket payment in 2018/19. Payment via privately purchased insurance schemes and employer-based insurance schemes taken together accounted for 17% in 2018/19. Over the past decade or so, the share attributed to privately purchased insurance schemes had shown a distinct uptrend.

(c) Health care providers ([Tables 3.1 – 3.3](#) and [Figure 3.1](#))

1. Analysed by provider, spending at providers of ambulatory health care and at hospitals taken together persistently accounted for more than 70% of current health expenditure. In 2018/19, the share was 75%.
2. However, the trend for health expenditure at providers of ambulatory health care and at hospitals was diverse. Spending at providers of ambulatory health care as a share of current health expenditure had decreased gradually from 42% in 1989/90 to 24% in 2018/19. On the other hand, the faster increase in spending at hospitals led to a rise in the hospital share of current health expenditure from 34% to 50% during the same period.
3. Public health expenditure was mostly incurred at hospitals, which accounted for 71% of public current health expenditure in 2018/19. Whereas private health expenditure was mostly incurred at providers of ambulatory health care and hospitals, which accounted for 38% and 29% of private current health expenditure respectively in 2018/19.

(d) Health care functions ([Tables 4.1 – 4.5](#) and [Figure 4.1](#))

1. Analysed by health care function, the two largest components of current health expenditure were persistently outpatient curative care (32% – 44%) and inpatient curative care (23% – 30%) during the period from 1989/90 to 2018/19. In 2018/19, their respective shares stood at 32% and 28%.
2. Public current health expenditure was mostly incurred in inpatient curative care and outpatient curative care, with respective shares of 32% and 26% in 2018/19. Private current health expenditure was concentrated in outpatient curative care, inpatient curative care and medical goods with respective shares of 38%, 24% and 18%.

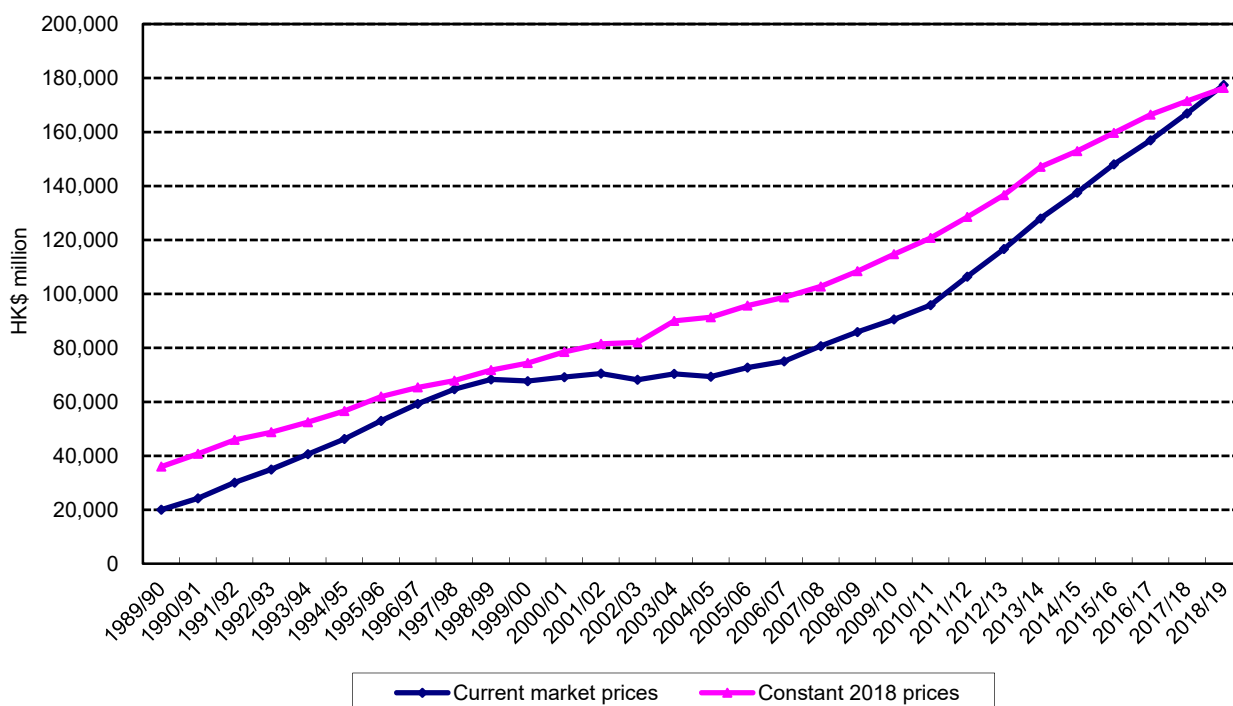
(e) Comparison with other economies ([Table 5.1](#))

1. Amongst the places with similar economic development, Hong Kong's healthcare system affords service quality and health outcome that fare well by global standards at relatively low current expenditure on health and public current health expenditures as percentages of GDP (5.9% and 3.0% respectively in 2018/19), indicating cost efficiency and effectiveness.
2. Hong Kong's public health expenditure to GDP should also be considered in conjunction with her low tax regime. The public health expenditure, expressed as a percentage of total tax revenue, of Hong Kong ranks the 9<sup>th</sup> highest among the 15 places with similar economic development.

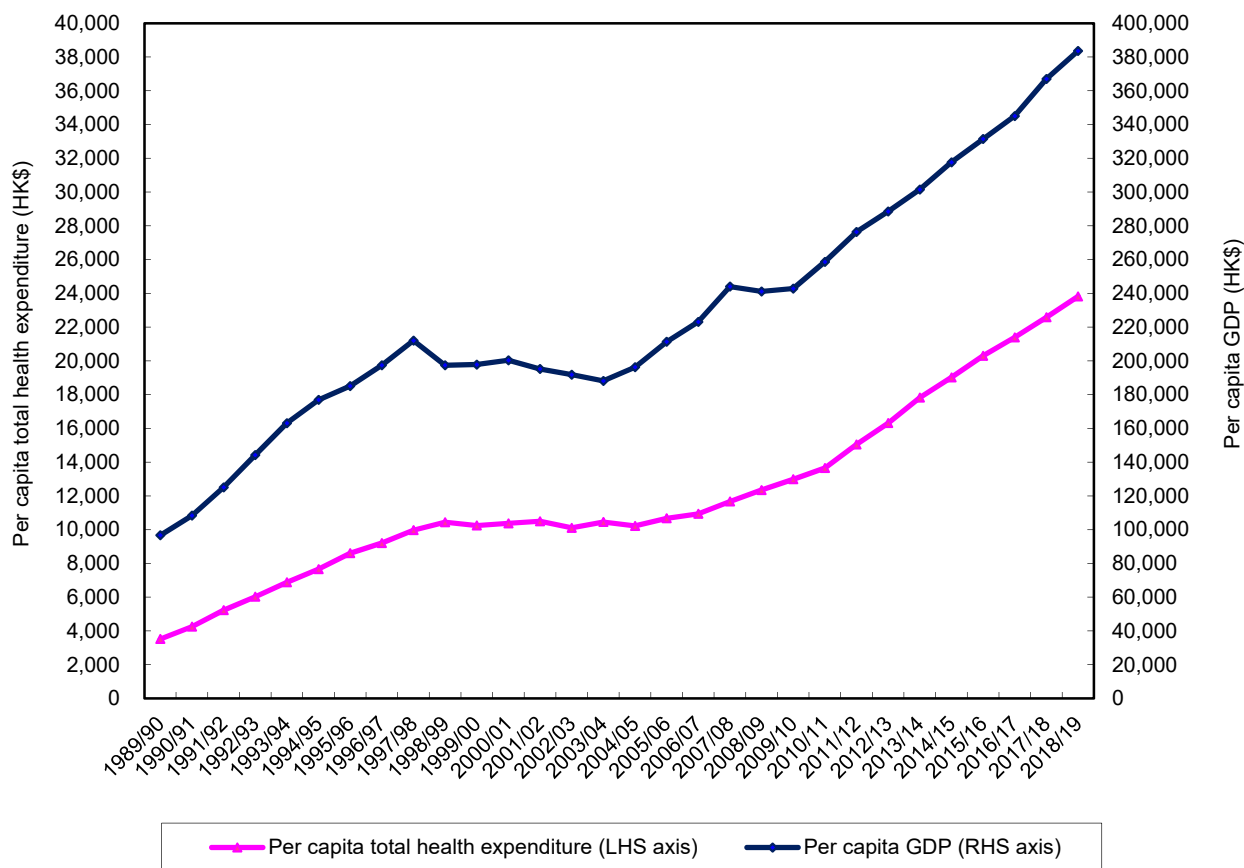
(f) Further detailed tabulations

1. More detailed cross-tabulations of current health expenditure by financing scheme, provider and function are presented in [Tables 6.1 – 6.4](#).

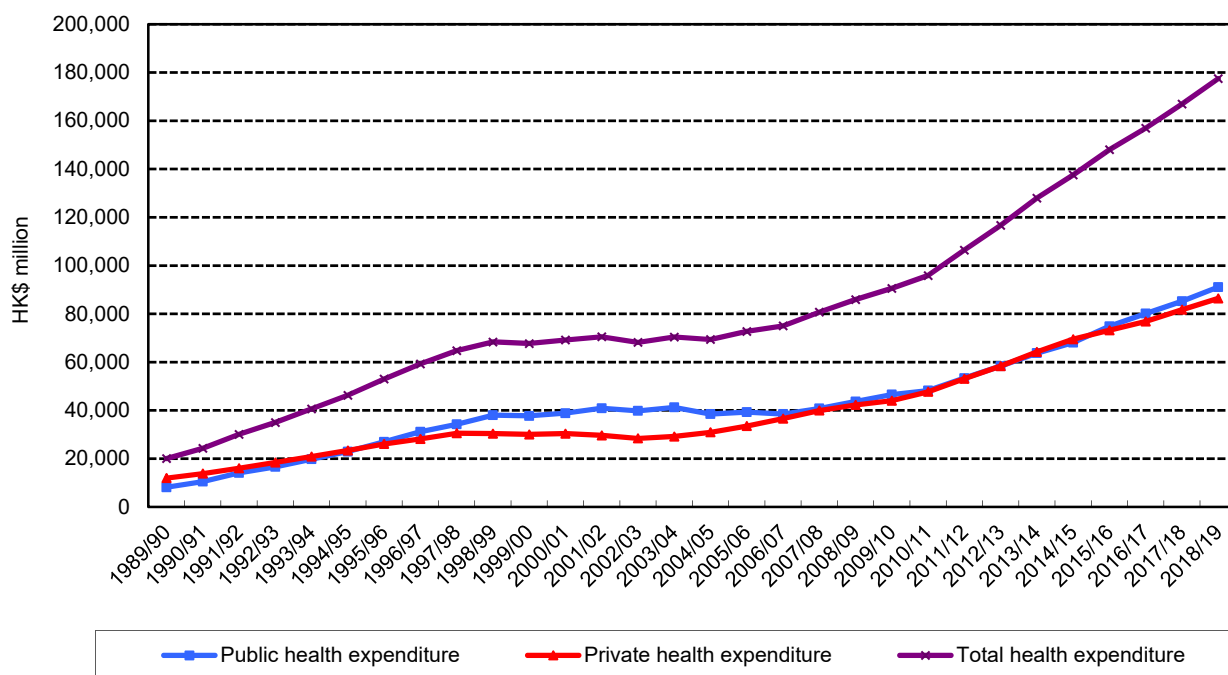
**Figure 1.1 Total health expenditure at current market and constant prices, 1989/90 – 2018/19**



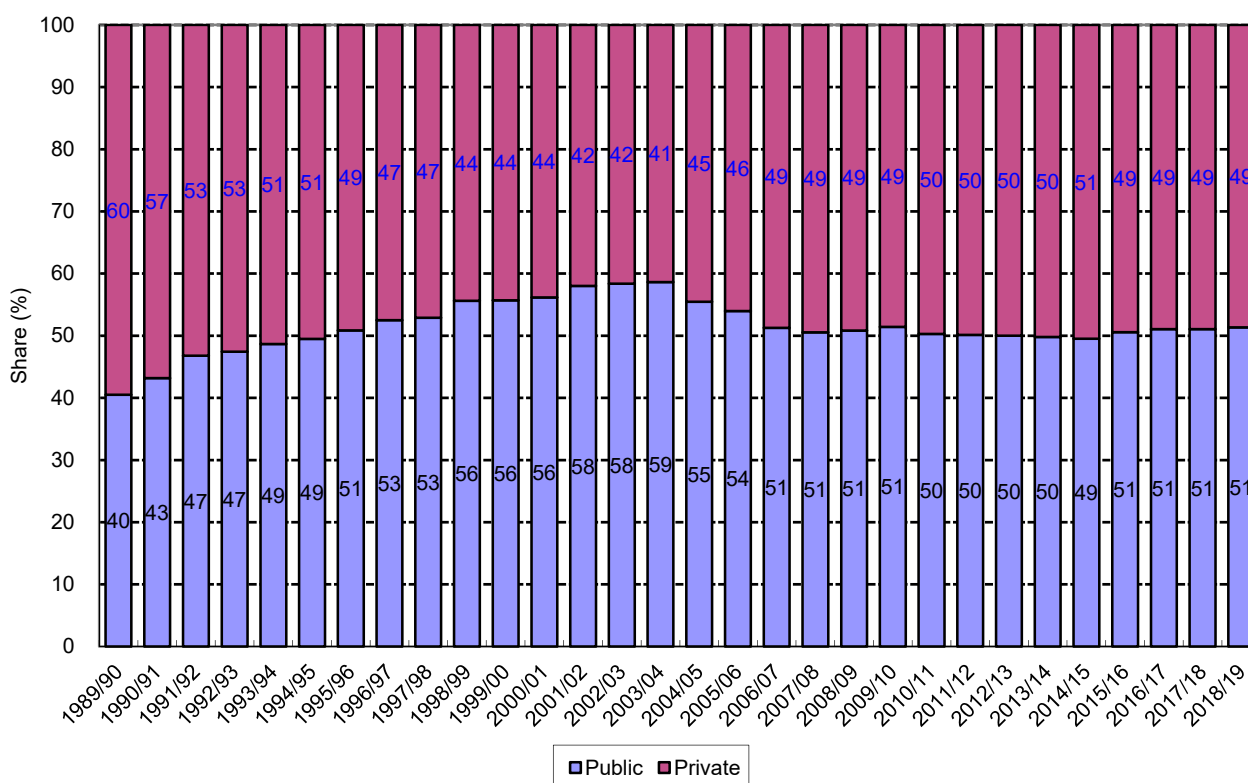
**Figure 1.2 Per capita total health expenditure and GDP (at current market prices), 1989/90 – 2018/19**



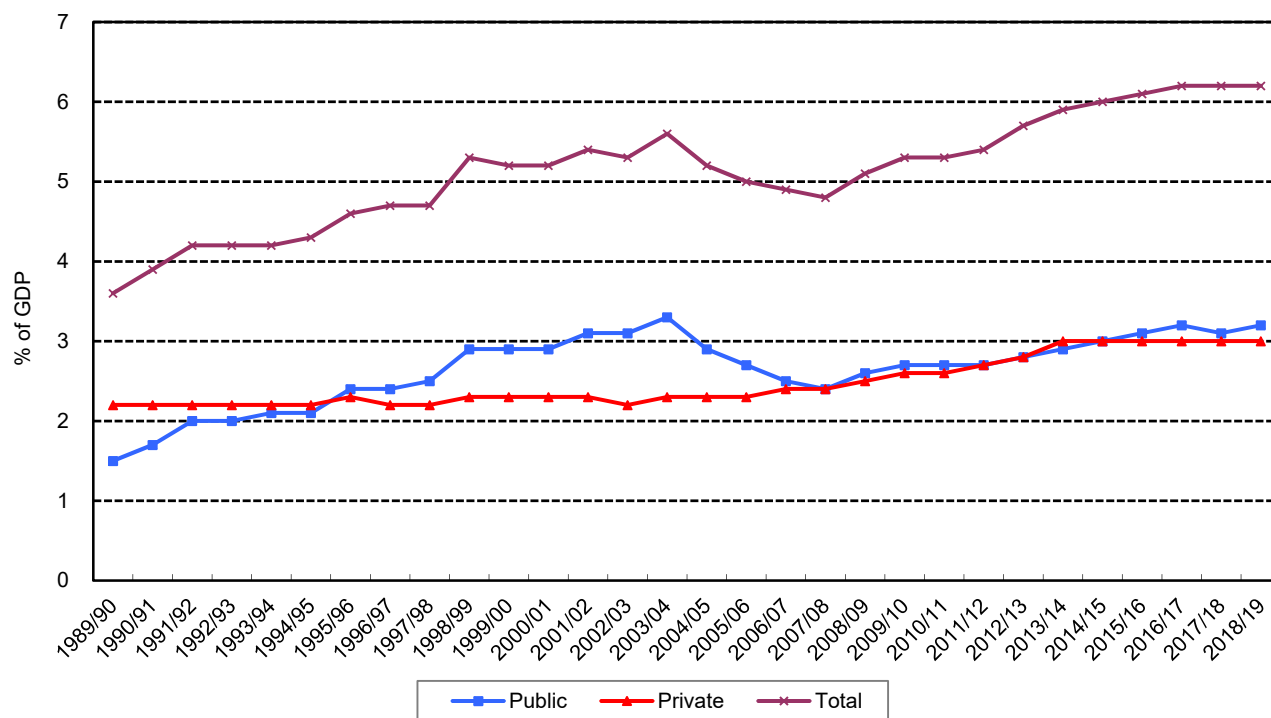
**Figure 2.1 Public, private and total health expenditure (at current market prices), 1989/90 – 2018/19**



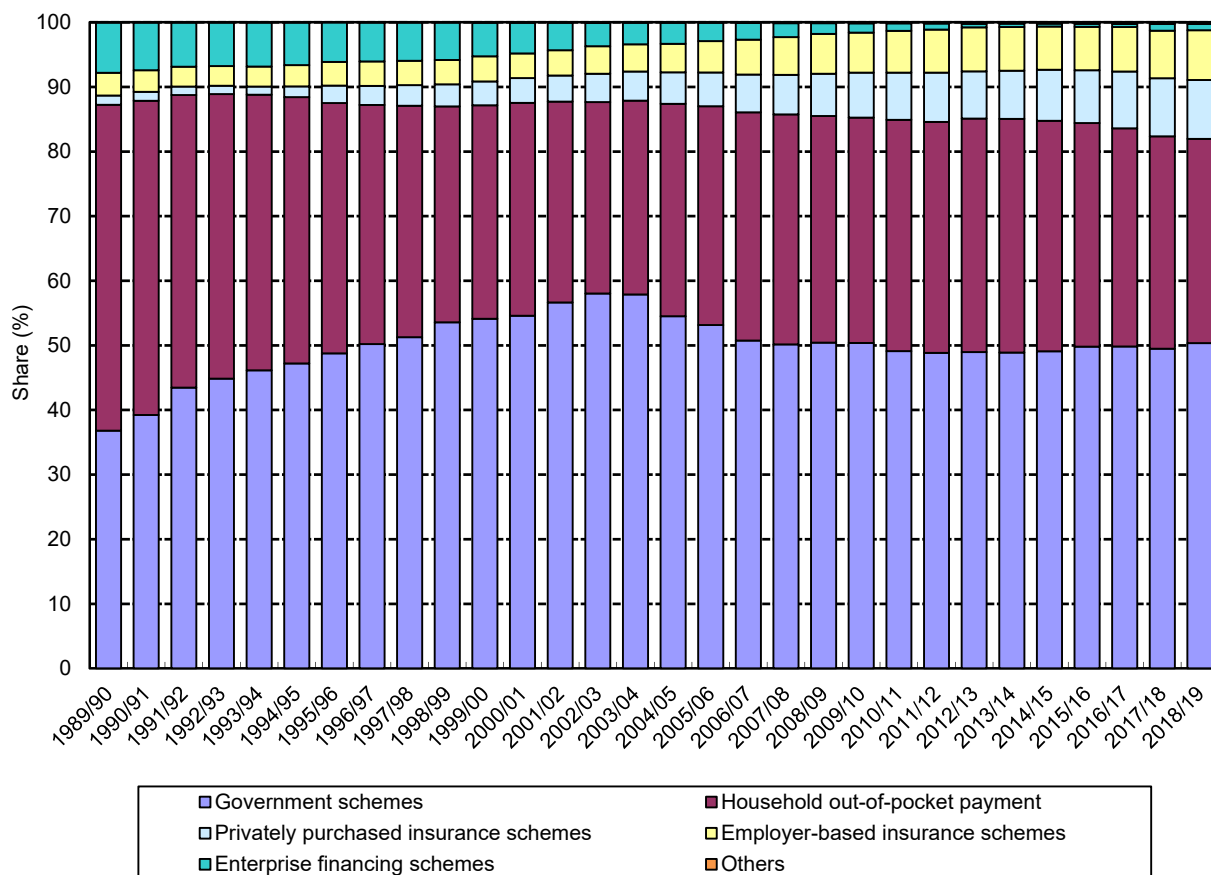
**Figure 2.2 Public and private share of total health expenditure (at current market prices), 1989/90 – 2018/19**



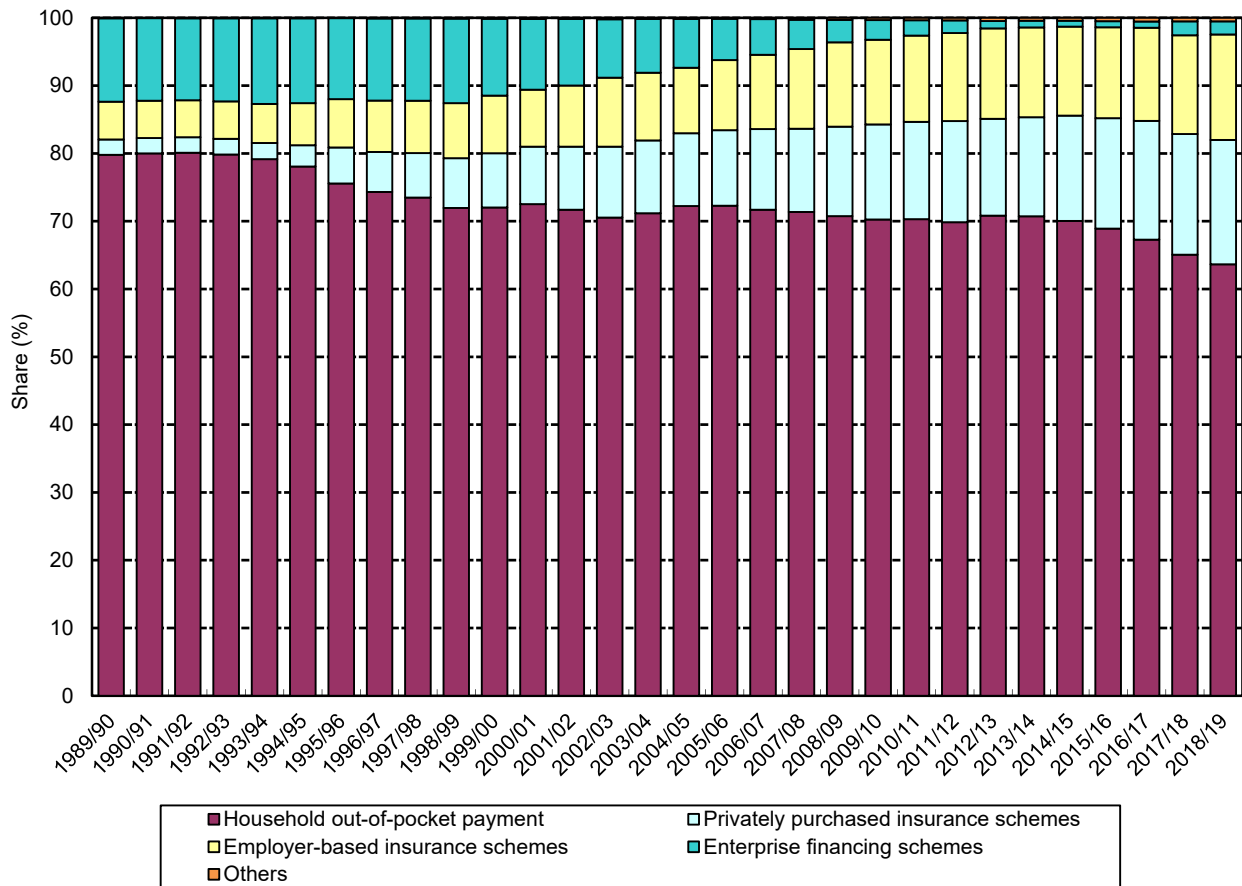
**Figure 2.3 Public and private total health expenditure as a percentage of GDP (at current market prices), 1989/90 – 2018/19**



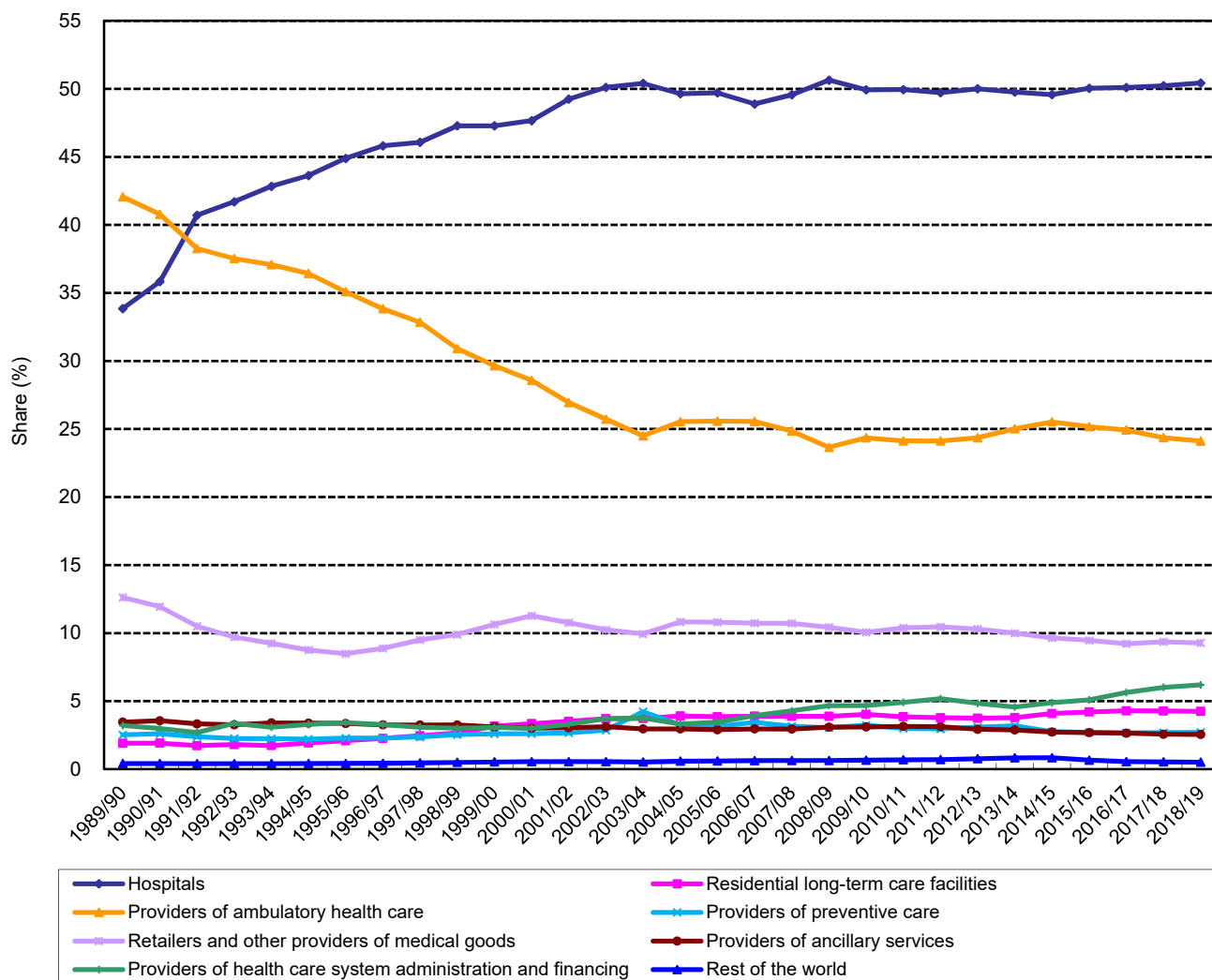
**Figure 2.4 Share of current health expenditure by financing scheme (at current market prices), 1989/90 – 2018/19**



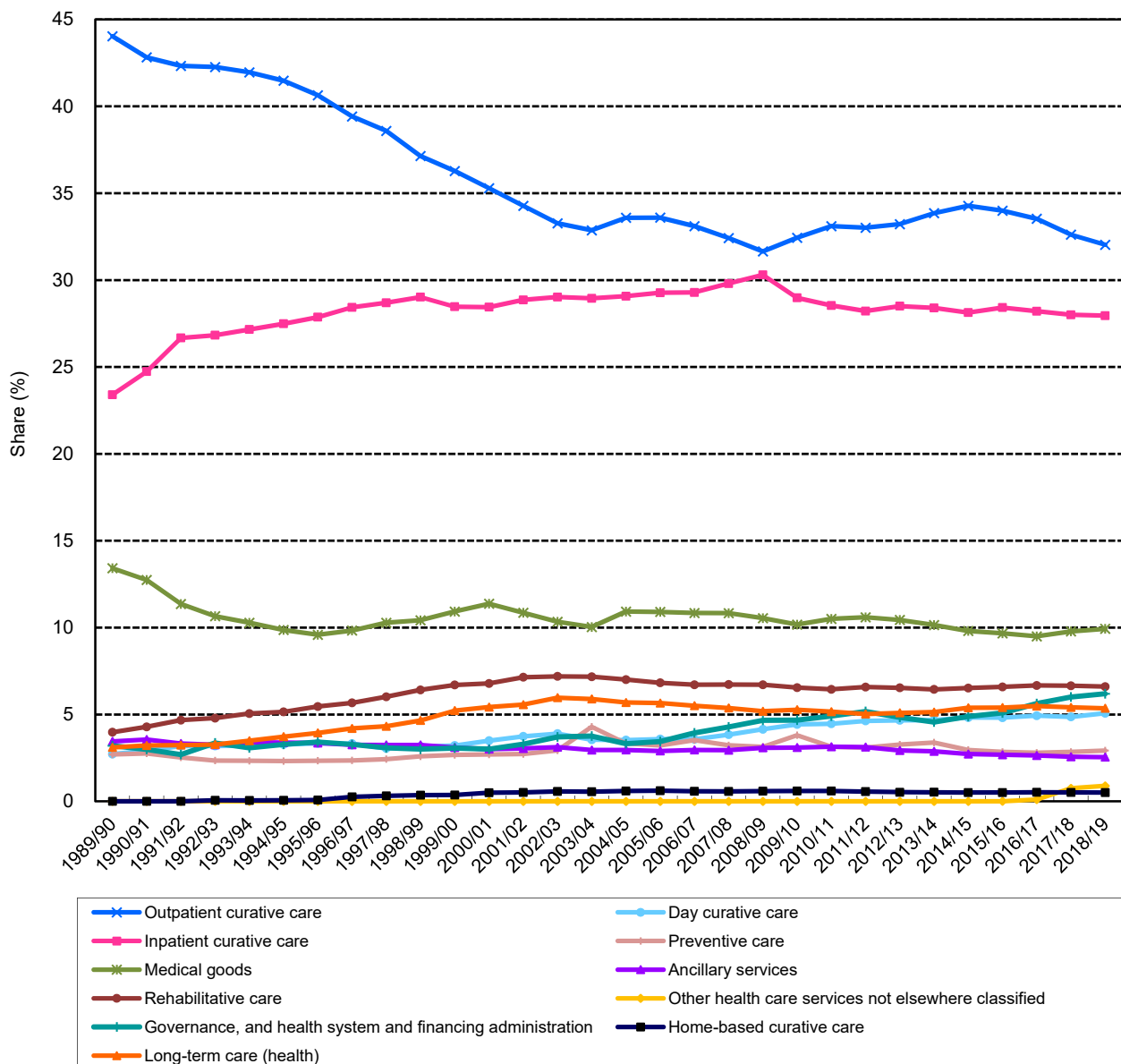
**Figure 2.5 Share of private current health expenditure by financing scheme (at current market prices), 1989/90 – 2018/19**



**Figure 3.1 Share of current health expenditure by provider (at current market prices), 1989/90 – 2018/19**



**Figure 4.1 Share of current health expenditure by function (at current market prices), 1989/90 – 2018/19**





**Table 1.1 Health expenditure, 1989/90 – 2018/19**

Fiscal year	At Current Market Prices						At Constant 2018 Prices						Total health expenditure	Current health expenditure
	Total health expenditure		Current health expenditure		GDP		Total health expenditure		Current health expenditure		GDP			
	HK\$ million	Annual change (%)	HK\$ million	Annual change (%)	HK\$ million	Annual change (%)	HK\$ million	Annual change (%)	HK\$ million	Annual change (%)	HK\$ million	Annual change (%)	As a % of GDP	
1989/90	20,024	-	18,303	-	549,666	-	35,993	-	32,900	-	988,016	-	3.6	3.3
1990/91	24,249	21.1	22,105	20.8	617,918	12.4	40,732	13.2	37,130	12.9	1,037,939	5.1	3.9	3.6
1991/92	30,069	24.0	27,785	25.7	719,477	16.4	45,876	12.6	42,390	14.2	1,097,675	5.8	4.2	3.9
1992/93	34,955	16.2	32,713	17.7	836,467	16.3	48,742	6.2	45,615	7.6	1,166,385	6.3	4.2	3.9
1993/94	40,598	16.1	37,433	14.4	962,337	15.0	52,440	7.6	48,352	6.0	1,243,058	6.6	4.2	3.9
1994/95	46,250	13.9	43,011	14.9	1,067,386	10.9	56,602	7.9	52,638	8.9	1,306,278	5.1	4.3	4.0
1995/96	52,965	14.5	49,072	14.1	1,139,319	6.7	61,971	9.5	57,415	9.1	1,333,032	2.0	4.6	4.3
1996/97	59,244	11.9	55,626	13.4	1,270,280	11.5	65,322	5.4	61,333	6.8	1,400,591	5.1	4.7	4.4
1997/98	64,697	9.2	61,347	10.3	1,375,859	8.3	67,853	3.9	64,339	4.9	1,442,970	3.0	4.7	4.5
1998/99	68,308	5.6	64,210	4.7	1,291,361	-6.1	71,756	5.8	67,451	4.8	1,356,546	-6.0	5.3	5.0
1999/00	67,677	-0.9	64,596	0.6	1,306,811	1.2	74,339	3.6	70,955	5.2	1,435,453	5.8	5.2	4.9
2000/01	69,148	2.2	66,084	2.3	1,335,305	2.2	78,486	5.6	75,009	5.7	1,515,645	5.6	5.2	4.9
2001/02	70,486	1.9	67,539	2.2	1,310,612	-1.8	81,459	3.8	78,054	4.1	1,514,653	-0.1	5.4	5.2
2002/03	68,172	-3.3	66,852	-1.0	1,293,484	-1.3	82,006	0.7	80,418	3.0	1,555,955	2.7	5.3	5.2
2003/04	70,364	3.2	68,043	1.8	1,266,023	-2.1	89,972	9.7	87,005	8.2	1,618,829	4.0	5.6	5.4
2004/05	69,349	-1.4	67,104	-1.4	1,330,921	5.1	91,353	1.5	88,395	1.6	1,753,202	8.3	5.2	5.0
2005/06	72,702	4.8	70,062	4.4	1,439,689	8.2	95,635	4.7	92,163	4.3	1,893,834	8.0	5.0	4.9
2006/07	75,000	3.2	71,859	2.6	1,529,844	6.3	98,688	3.2	94,556	2.6	2,013,033	6.3	4.9	4.7
2007/08	80,678	7.6	77,156	7.4	1,687,679	10.3	102,721	4.1	98,237	3.9	2,148,807	6.7	4.8	4.6
2008/09	85,895	6.5	82,739	7.2	1,677,759	-0.6	108,391	5.5	104,409	6.3	2,117,172	-1.5	5.1	4.9
2009/10	90,535	5.4	86,843	5.0	1,692,995	0.9	114,688	5.8	110,012	5.4	2,144,656	1.3	5.3	5.1
2010/11	95,858	5.9	91,432	5.3	1,817,016	7.3	120,733	5.3	115,158	4.7	2,288,532	6.7	5.3	5.0
2011/12	106,392	11.0	101,034	10.5	1,954,617	7.6	128,509	6.4	122,038	6.0	2,360,948	3.2	5.4	5.2
2012/13	116,633	9.6	111,527	10.4	2,063,036	5.5	136,600	6.3	130,621	7.0	2,416,224	2.3	5.7	5.4
2013/14	127,929	9.7	121,265	8.7	2,164,581	4.9	147,066	7.7	139,405	6.7	2,488,382	3.0	5.9	5.6
2014/15	137,508	7.5	130,774	7.8	2,296,258	6.1	152,907	4.0	145,420	4.3	2,553,418	2.6	6.0	5.7
2015/16	147,996	7.6	140,833	7.7	2,416,676	5.2	159,638	4.4	151,912	4.5	2,606,793	2.1	6.1	5.8
2016/17	156,918	6.0	147,686	4.9	2,531,300	4.7	166,405	4.2	156,614	3.1	2,684,334	3.0	6.2	5.8
2017/18	166,889	6.4	157,026	6.3	2,712,504	7.2	171,456	3.0	161,324	3.0	2,786,738	3.8	6.2	5.8
2018/19	177,447	6.3	170,022	8.3	2,858,489	5.4	176,291	2.8	168,914	4.7	2,839,863	1.9	6.2	5.9

**Table 1.2 Per capita health expenditure, 1989/90 – 2018/19**

Fiscal year	Population estimates (million)	At Current Market Prices						At Constant 2018 Prices					
		Per capita total health expenditure		Per capita current health expenditure		Per capita GDP		Per capita total health expenditure		Per capita current health expenditure		Per capita GDP	
		HK\$	Annual change (%)	HK\$	Annual change (%)	HK\$	Annual change (%)	HK\$	Annual change (%)	HK\$	Annual change (%)	HK\$	Annual change (%)
1989/90	5.7	3,522	-	3,219	-	96,667	-	6,330	-	5,786	-	173,757	-
1990/91	5.7	4,251	20.7	3,875	20.4	108,321	12.1	7,140	12.8	6,509	12.5	181,951	4.7
1991/92	5.8	5,228	23.0	4,830	24.7	125,083	15.5	7,976	11.7	7,370	13.2	190,834	4.9
1992/93	5.8	6,026	15.3	5,640	16.8	144,206	15.3	8,403	5.4	7,864	6.7	201,084	5.4
1993/94	5.9	6,880	14.2	6,343	12.5	163,080	13.1	8,887	5.8	8,194	4.2	210,652	4.8
1994/95	6.0	7,663	11.4	7,127	12.3	176,854	8.4	9,378	5.5	8,722	6.4	216,436	2.7
1995/96	6.2	8,604	12.3	7,971	11.9	185,072	4.6	10,067	7.3	9,327	6.9	216,538	*
1996/97	6.4	9,206	7.0	8,644	8.4	197,386	6.7	10,150	0.8	9,530	2.2	217,635	0.5
1997/98	6.5	9,970	8.3	9,454	9.4	212,020	7.4	10,456	3.0	9,915	4.0	222,361	2.2
1998/99	6.5	10,439	4.7	9,812	3.8	197,344	-6.9	10,966	4.9	10,308	4.0	207,306	-6.8
1999/00	6.6	10,244	-1.9	9,778	-0.4	197,807	0.2	11,252	2.6	10,740	4.2	217,279	4.8
2000/01	6.7	10,375	1.3	9,915	1.4	200,346	1.3	11,776	4.7	11,254	4.8	227,404	4.7
2001/02	6.7	10,498	1.2	10,059	1.5	195,197	-2.6	12,132	3.0	11,625	3.3	225,586	-0.8
2002/03	6.7	10,108	-3.7	9,913	-1.5	191,795	-1.7	12,160	0.2	11,924	2.6	230,714	2.3
2003/04	6.7	10,454	3.4	10,109	2.0	188,094	-1.9	13,367	9.9	12,926	8.4	240,511	4.2
2004/05	6.8	10,223	-2.2	9,892	-2.1	196,200	4.3	13,467	0.7	13,031	0.8	258,451	7.5
2005/06	6.8	10,671	4.4	10,283	4.0	211,309	7.7	14,037	4.2	13,527	3.8	277,965	7.6
2006/07	6.9	10,938	2.5	10,480	1.9	223,104	5.6	14,392	2.5	13,789	1.9	293,569	5.6
2007/08	6.9	11,665	6.6	11,156	6.5	244,015	9.4	14,852	3.2	14,204	3.0	310,687	5.8
2008/09	7.0	12,345	5.8	11,892	6.6	241,134	-1.2	15,578	4.9	15,006	5.6	304,288	-2.1
2009/10	7.0	12,984	5.2	12,455	4.7	242,800	0.7	16,448	5.6	15,777	5.1	307,575	1.1
2010/11	7.0	13,647	5.1	13,017	4.5	258,679	6.5	17,188	4.5	16,394	3.9	325,807	5.9
2011/12	7.1	15,045	10.2	14,287	9.8	276,404	6.9	18,173	5.7	17,257	5.3	333,863	2.5
2012/13	7.2	16,312	8.4	15,598	9.2	288,532	4.4	19,105	5.1	18,268	5.9	337,929	1.2
2013/14	7.2	17,820	9.2	16,892	8.3	301,520	4.5	20,486	7.2	19,419	6.3	346,624	2.6
2014/15	7.2	19,020	6.7	18,089	7.1	317,623	5.3	21,150	3.2	20,115	3.6	353,194	1.9
2015/16	7.3	20,298	6.7	19,315	6.8	331,447	4.4	21,894	3.5	20,835	3.6	357,521	1.2
2016/17	7.3	21,388	5.4	20,130	4.2	345,024	4.1	22,681	3.6	21,347	2.5	365,883	2.3
2017/18	7.4	22,578	5.6	21,244	5.5	366,966	6.4	23,196	2.3	21,825	2.2	377,009	3.0
2018/19	7.5	23,815	5.5	22,819	7.4	383,638	4.5	23,660	2.0	22,670	3.9	381,139	1.1

Note: \* within  $\pm 0.05\%$

**Table 2.1 Total health expenditure by public and private sectors, 1989/90 – 2018/19**

Fiscal year	At Current Market Prices (HK\$ million)			At Constant 2018 Prices (HK\$ million)			Public share (%)	As a % of GDP		
	Public health expenditure	Private health expenditure	Total health expenditure	Public health expenditure	Private health expenditure	Total health expenditure		Public health expenditure	Private health expenditure	Total health expenditure
1989/90	8,106	11,918	20,024	14,571	21,422	35,993	40.5	1.5	2.2	3.6
1990/91	10,471	13,778	24,249	17,589	23,143	40,732	43.2	1.7	2.2	3.9
1991/92	14,065	16,004	30,069	21,459	24,417	45,876	46.8	2.0	2.2	4.2
1992/93	16,580	18,375	34,955	23,120	25,622	48,742	47.4	2.0	2.2	4.2
1993/94	19,756	20,841	40,598	25,519	26,921	52,440	48.7	2.1	2.2	4.2
1994/95	22,884	23,367	46,250	28,005	28,596	56,602	49.5	2.1	2.2	4.3
1995/96	26,929	26,036	52,965	31,508	30,463	61,971	50.8	2.4	2.3	4.6
1996/97	31,106	28,138	59,244	34,297	31,025	65,322	52.5	2.4	2.2	4.7
1997/98	34,210	30,488	64,697	35,878	31,975	67,853	52.9	2.5	2.2	4.7
1998/99	37,981	30,327	68,308	39,898	31,858	71,756	55.6	2.9	2.3	5.3
1999/00	37,686	29,990	67,677	41,396	32,942	74,339	55.7	2.9	2.3	5.2
2000/01	38,829	30,318	69,148	44,074	34,413	78,486	56.2	2.9	2.3	5.2
2001/02	40,879	29,607	70,486	47,243	34,216	81,459	58.0	3.1	2.3	5.4
2002/03	39,791	28,382	68,172	47,865	34,141	82,006	58.4	3.1	2.2	5.3
2003/04	41,248	29,116	70,364	52,743	37,229	89,972	58.6	3.3	2.3	5.6
2004/05	38,461	30,888	69,349	50,665	40,688	91,353	55.5	2.9	2.3	5.2
2005/06	39,233	33,468	72,702	51,609	44,026	95,635	54.0	2.7	2.3	5.0
2006/07	38,446	36,554	75,000	50,589	48,099	98,688	51.3	2.5	2.4	4.9
2007/08	40,762	39,916	80,678	51,899	50,822	102,721	50.5	2.4	2.4	4.8
2008/09	43,656	42,239	85,895	55,089	53,302	108,391	50.8	2.6	2.5	5.1
2009/10	46,544	43,991	90,535	58,962	55,727	114,688	51.4	2.7	2.6	5.3
2010/11	48,197	47,661	95,858	60,704	60,029	120,733	50.3	2.7	2.6	5.3
2011/12	53,330	53,062	106,392	64,416	64,093	128,509	50.1	2.7	2.7	5.4
2012/13	58,323	58,310	116,633	68,308	68,293	136,600	50.0	2.8	2.8	5.7
2013/14	63,708	64,221	127,929	73,238	73,828	147,066	49.8	2.9	3.0	5.9
2014/15	68,060	69,448	137,508	75,682	77,226	152,907	49.5	3.0	3.0	6.0
2015/16	74,821	73,175	147,996	80,707	78,931	159,638	50.6	3.1	3.0	6.1
2016/17	80,098	76,821	156,918	84,940	81,465	166,405	51.0	3.2	3.0	6.2
2017/18	85,202	81,687	166,889	87,533	83,923	171,456	51.1	3.1	3.0	6.2
2018/19	91,083	86,364	177,447	90,490	85,801	176,291	51.3	3.2	3.0	6.2

**Table 2.2 Current health expenditure by public and private sectors, 1989/90 – 2018/19**

Fiscal year	At Current Market Prices (HK\$ million)			At Constant 2018 Prices (HK\$ million)			Public share (%)	As a % of GDP		
	Public health expenditure	Private health expenditure	Current health expenditure	Public health expenditure	Private health expenditure	Current health expenditure		Public health expenditure	Private health expenditure	Current health expenditure
1989/90	6,734	11,570	18,303	12,104	20,797	32,900	36.8	1.2	2.1	3.3
1990/91	8,669	13,435	22,105	14,562	22,567	37,130	39.2	1.4	2.2	3.6
1991/92	12,076	15,709	27,785	18,424	23,966	42,390	43.5	1.7	2.2	3.9
1992/93	14,673	18,040	32,713	20,460	25,155	45,615	44.9	1.8	2.2	3.9
1993/94	17,269	20,163	37,433	22,307	26,045	48,352	46.1	1.8	2.1	3.9
1994/95	20,304	22,708	43,011	24,848	27,790	52,638	47.2	1.9	2.1	4.0
1995/96	23,929	25,142	49,072	27,998	29,417	57,415	48.8	2.1	2.2	4.3
1996/97	27,917	27,709	55,626	30,781	30,551	61,333	50.2	2.2	2.2	4.4
1997/98	31,440	29,907	61,347	32,973	31,366	64,339	51.2	2.3	2.2	4.5
1998/99	34,388	29,822	64,210	36,124	31,328	67,451	53.6	2.7	2.3	5.0
1999/00	34,944	29,653	64,596	38,384	32,572	70,955	54.1	2.7	2.3	4.9
2000/01	36,066	30,018	66,084	40,937	34,072	75,009	54.6	2.7	2.2	4.9
2001/02	38,240	29,298	67,539	44,194	33,860	78,054	56.6	2.9	2.2	5.2
2002/03	38,781	28,071	66,852	46,651	33,767	80,418	58.0	3.0	2.2	5.2
2003/04	39,381	28,662	68,043	50,356	36,650	87,005	57.9	3.1	2.3	5.4
2004/05	36,580	30,524	67,104	48,186	40,209	88,395	54.5	2.7	2.3	5.0
2005/06	37,225	32,837	70,062	48,968	43,195	92,163	53.1	2.6	2.3	4.9
2006/07	36,457	35,402	71,859	47,972	46,584	94,556	50.7	2.4	2.3	4.7
2007/08	38,697	38,459	77,156	49,270	48,968	98,237	50.2	2.3	2.3	4.6
2008/09	41,717	41,023	82,739	52,642	51,767	104,409	50.4	2.5	2.4	4.9
2009/10	43,736	43,107	86,843	55,404	54,608	110,012	50.4	2.6	2.5	5.1
2010/11	44,904	46,527	91,432	56,557	58,601	115,158	49.1	2.5	2.6	5.0
2011/12	49,333	51,701	101,034	59,588	62,449	122,038	48.8	2.5	2.6	5.2
2012/13	54,591	56,936	111,527	63,937	66,683	130,621	48.9	2.6	2.8	5.4
2013/14	59,257	62,008	121,265	68,121	71,284	139,405	48.9	2.7	2.9	5.6
2014/15	64,174	66,600	130,774	71,361	74,059	145,420	49.1	2.8	2.9	5.7
2015/16	70,132	70,701	140,833	75,649	76,263	151,912	49.8	2.9	2.9	5.8
2016/17	73,565	74,120	147,686	78,013	78,601	156,614	49.8	2.9	2.9	5.8
2017/18	77,700	79,327	157,026	79,826	81,497	161,324	49.5	2.9	2.9	5.8
2018/19	85,586	84,436	170,022	85,028	83,886	168,914	50.3	3.0	3.0	5.9

**Table 2.3 Current health expenditure by financing scheme (at current market prices), 1989/90 – 2018/19**

Fiscal year	Public		Private															Current health expenditure				
	Government schemes		Employer-based insurance schemes			Privately purchased insurance schemes			Non-profit institutions serving households financing schemes			Enterprise financing schemes			Household out-of-pocket payment					Rest of the world financing schemes		
	HK\$ million	(%)	HK\$ million	(%)	[%]	HK\$ million	(%)	[%]	HK\$ million	(%)	[%]	HK\$ million	(%)	[%]	HK\$ million	(%)	[%]	HK\$ million	(%)	[%]	HK\$ million	(%)
1989/90	6,734	(36.8)	645	(3.5)	[5.6]	263	(1.4)	[2.3]	8	(*)	[0.1]	1,423	(7.8)	[12.3]	9,231	(50.4)	[79.8]	1	(*)	[*]	18,303	(100.0)
1990/91	8,669	(39.2)	738	(3.3)	[5.5]	306	(1.4)	[2.3]	8	(*)	[0.1]	1,635	(7.4)	[12.2]	10,747	(48.6)	[80.0]	#	(*)	[*]	22,105	(100.0)
1991/92	12,076	(43.5)	857	(3.1)	[5.5]	361	(1.3)	[2.3]	11	(*)	[0.1]	1,899	(6.8)	[12.1]	12,580	(45.3)	[80.1]	1	(*)	[*]	27,785	(100.0)
1992/93	14,673	(44.9)	996	(3.0)	[5.5]	418	(1.3)	[2.3]	12	(*)	[0.1]	2,211	(6.8)	[12.3]	14,402	(44.0)	[79.8]	1	(*)	[*]	32,713	(100.0)
1993/94	17,269	(46.1)	1,159	(3.1)	[5.7]	480	(1.3)	[2.4]	12	(*)	[0.1]	2,549	(6.8)	[12.6]	15,961	(42.6)	[79.2]	2	(*)	[*]	37,433	(100.0)
1994/95	20,304	(47.2)	1,407	(3.3)	[6.2]	716	(1.7)	[3.2]	15	(*)	[0.1]	2,844	(6.6)	[12.5]	17,725	(41.2)	[78.1]	1	(*)	[*]	43,011	(100.0)
1995/96	23,929	(48.8)	1,792	(3.7)	[7.1]	1,336	(2.7)	[5.3]	16	(*)	[0.1]	2,999	(6.1)	[11.9]	18,999	(38.7)	[75.6]	#	(*)	[*]	49,072	(100.0)
1996/97	27,917	(50.2)	2,099	(3.8)	[7.6]	1,641	(2.9)	[5.9]	25	(*)	[0.1]	3,356	(6.0)	[12.1]	20,587	(37.0)	[74.3]	#	(*)	[*]	55,626	(100.0)
1997/98	31,440	(51.2)	2,311	(3.8)	[7.7]	1,961	(3.2)	[6.6]	33	(0.1)	[0.1]	3,626	(5.9)	[12.1]	21,975	(35.8)	[73.5]	#	(*)	[*]	61,347	(100.0)
1998/99	34,388	(53.6)	2,425	(3.8)	[8.1]	2,188	(3.4)	[7.3]	38	(0.1)	[0.1]	3,715	(5.8)	[12.5]	21,456	(33.4)	[71.9]	#	(*)	[*]	64,210	(100.0)
1999/00	34,944	(54.1)	2,518	(3.9)	[8.5]	2,374	(3.7)	[8.0]	43	(0.1)	[0.1]	3,365	(5.2)	[11.3]	21,353	(33.1)	[72.0]	#	(*)	[*]	64,596	(100.0)
2000/01	36,066	(54.6)	2,521	(3.8)	[8.4]	2,541	(3.8)	[8.5]	55	(0.1)	[0.2]	3,132	(4.7)	[10.4]	21,769	(32.9)	[72.5]	#	(*)	[*]	66,084	(100.0)
2001/02	38,240	(56.6)	2,645	(3.9)	[9.0]	2,721	(4.0)	[9.3]	52	(0.1)	[0.2]	2,874	(4.3)	[9.8]	21,006	(31.1)	[71.7]	#	(*)	[*]	67,539	(100.0)
2002/03	38,781	(58.0)	2,855	(4.3)	[10.2]	2,935	(4.4)	[10.5]	60	(0.1)	[0.2]	2,421	(3.6)	[8.6]	19,801	(29.6)	[70.5]	#	(*)	[*]	66,852	(100.0)
2003/04	39,381	(57.9)	2,861	(4.2)	[10.0]	3,079	(4.5)	[10.7]	46	(0.1)	[0.2]	2,275	(3.3)	[7.9]	20,401	(30.0)	[71.2]	#	(*)	[*]	68,043	(100.0)
2004/05	36,580	(54.5)	2,946	(4.4)	[9.7]	3,284	(4.9)	[10.8]	52	(0.1)	[0.2]	2,197	(3.3)	[7.2]	22,045	(32.9)	[72.2]	-	(-)	[-]	67,104	(100.0)
2005/06	37,225	(53.1)	3,391	(4.8)	[10.3]	3,663	(5.2)	[11.2]	51	(0.1)	[0.2]	2,001	(2.9)	[6.1]	23,730	(33.9)	[72.3]	#	(*)	[*]	70,062	(100.0)
2006/07	36,457	(50.7)	3,879	(5.4)	[11.0]	4,213	(5.9)	[11.9]	73	(0.1)	[0.2]	1,858	(2.6)	[5.2]	25,378	(35.3)	[71.7]	#	(*)	[*]	71,859	(100.0)
2007/08	38,697	(50.2)	4,515	(5.9)	[11.7]	4,721	(6.1)	[12.3]	107	(0.1)	[0.3]	1,668	(2.2)	[4.3]	27,447	(35.6)	[71.4]	1	(*)	[*]	77,156	(100.0)
2008/09	41,717	(50.4)	5,103	(6.2)	[12.4]	5,417	(6.5)	[13.2]	124	(0.1)	[0.3]	1,361	(1.6)	[3.3]	29,017	(35.1)	[70.7]	1	(*)	[*]	82,739	(100.0)
2009/10	43,736	(50.4)	5,392	(6.2)	[12.5]	6,041	(7.0)	[14.0]	142	(0.2)	[0.3]	1,251	(1.4)	[2.9]	30,281	(34.9)	[70.2]	#	(*)	[*]	86,843	(100.0)
2010/11	44,904	(49.1)	5,920	(6.5)	[12.7]	6,682	(7.3)	[14.4]	162	(0.2)	[0.3]	1,059	(1.2)	[2.3]	32,702	(35.8)	[70.3]	1	(*)	[*]	91,432	(100.0)
2011/12	49,335	(48.8)	6,715	(6.6)	[13.0]	7,713	(7.6)	[14.9]	194	(0.2)	[0.4]	968	(1.0)	[1.9]	36,109	(35.7)	[69.8]	1	(*)	[*]	101,034	(100.0)
2012/13	54,600	(49.0)	7,590	(6.8)	[13.3]	8,139	(7.3)	[14.3]	274	(0.2)	[0.5]	615	(0.6)	[1.1]	40,310	(36.1)	[70.8]	#	(*)	[*]	111,527	(100.0)
2013/14	59,261	(48.9)	8,203	(6.8)	[13.2]	9,058	(7.5)	[14.6]	262	(0.2)	[0.4]	625	(0.5)	[1.0]	43,855	(36.2)	[70.7]	-	(-)	[-]	121,265	(100.0)
2014/15	64,176	(49.1)	8,740	(6.7)	[13.1]	10,349	(7.9)	[15.5]	286	(0.2)	[0.4]	584	(0.4)	[0.9]	46,640	(35.7)	[70.0]	-	(-)	[-]	130,774	(100.0)
2015/16	70,139	(49.8)	9,467	(6.7)	[13.4]	11,527	(8.2)	[16.3]	352	(0.3)	[0.5]	642	(0.5)	[0.9]	48,707	(34.6)	[68.9]	-	(-)	[-]	140,833	(100.0)
2016/17	73,573	(49.8)	10,187	(6.9)	[13.7]	12,981	(8.8)	[17.5]	405	(0.3)	[0.5]	687	(0.5)	[0.9]	49,852	(33.8)	[67.3]	-	(-)	[-]	147,686	(100.0)
2017/18	77,704	(49.5)	11,545	(7.4)	[14.6]	14,121	(9.0)	[17.8]	427	(0.3)	[0.5]	1,629	(1.0)	[2.1]	51,601	(32.9)	[65.1]	-	(-)	[-]	157,026	(100.0)
2018/19	85,590	(50.3)	13,130	(7.7)	[15.6]	15,488	(9.1)	[18.3]	454	(0.3)	[0.5]	1,630	(1.0)	[1.9]	53,731	(31.6)	[63.6]	-	(-)	[-]	170,022	(100.0)

Notes: Figures in brackets denote percentage of row total  
 Figures in square brackets denote share of private health expenditure  
 # less than HK\$0.5 million  
 \* less than 0.05%  
 - denotes nil

**Table 2.4 Current health expenditure by financing scheme and revenue of financing scheme (at current market prices), 2018/19**

(HK\$ million)

Health care financing scheme	Revenue of health care financing scheme						Current health expenditure
	Transfers from government domestic revenue	Voluntary prepayment from individuals / households	Voluntary prepayment from employers	Other revenues from households not elsewhere classified	Other revenues from corporations not elsewhere classified	Other revenues from non-profit institutions serving households not elsewhere classified	
Government schemes	85,586	-	-	-	-	4	85,590
Employer-based insurance schemes	-	-	13,130	-	-	-	13,130
Privately purchased insurance schemes	-	15,488	-	-	-	-	15,488
Non-profit institutions serving households financing schemes	-	-	-	-	-	454	454
Enterprise financing schemes	-	-	-	-	1,630	-	1,630
Household out-of-pocket payment	-	-	-	53,731	-	-	53,731
Current health expenditure	85,586	15,488	13,130	53,731	1,630	458	170,022

Note: - denotes nil

**Table 3.1 Current health expenditure by provider (at current market prices), 1989/90 – 2018/19**

Fiscal Year	Hospitals		Residential long-term care facilities		Providers of ambulatory health care		Providers of ancillary services		Retailers and other providers of medical goods		Providers of preventive care		Providers of health care system administration and financing		Rest of the world		Current health expenditure	
	HK\$ million	(%)	HK\$ million	(%)	HK\$ million	(%)	HK\$ million	(%)	HK\$ million	(%)	HK\$ million	(%)	HK\$ million	(%)	HK\$ million	(%)	HK\$ million	(%)
1989/90	6,195	(33.8)	349	(1.9)	7,697	(42.1)	632	(3.5)	2,309	(12.6)	461	(2.5)	586	(3.2)	75	(0.4)	18,303	(100.0)
1990/91	7,920	(35.8)	422	(1.9)	9,012	(40.8)	786	(3.6)	2,638	(11.9)	574	(2.6)	661	(3.0)	91	(0.4)	22,105	(100.0)
1991/92	11,311	(40.7)	480	(1.7)	10,631	(38.3)	924	(3.3)	2,918	(10.5)	662	(2.4)	748	(2.7)	111	(0.4)	27,785	(100.0)
1992/93	13,640	(41.7)	589	(1.8)	12,274	(37.5)	1,065	(3.3)	3,177	(9.7)	736	(2.3)	1,099	(3.4)	132	(0.4)	32,713	(100.0)
1993/94	16,033	(42.8)	648	(1.7)	13,878	(37.1)	1,271	(3.4)	3,460	(9.2)	839	(2.2)	1,151	(3.1)	153	(0.4)	37,433	(100.0)
1994/95	18,766	(43.6)	828	(1.9)	15,668	(36.4)	1,454	(3.4)	3,764	(8.8)	946	(2.2)	1,411	(3.3)	176	(0.4)	43,011	(100.0)
1995/96	22,024	(44.9)	1,026	(2.1)	17,214	(35.1)	1,646	(3.4)	4,163	(8.5)	1,118	(2.3)	1,677	(3.4)	203	(0.4)	49,072	(100.0)
1996/97	25,482	(45.8)	1,253	(2.3)	18,821	(33.8)	1,810	(3.3)	4,935	(8.9)	1,270	(2.3)	1,820	(3.3)	235	(0.4)	55,626	(100.0)
1997/98	28,261	(46.1)	1,505	(2.5)	20,147	(32.8)	1,990	(3.2)	5,829	(9.5)	1,451	(2.4)	1,886	(3.1)	278	(0.5)	61,347	(100.0)
1998/99	30,359	(47.3)	1,702	(2.7)	19,843	(30.9)	2,085	(3.2)	6,351	(9.9)	1,623	(2.5)	1,928	(3.0)	319	(0.5)	64,210	(100.0)
1999/00	30,540	(47.3)	2,039	(3.2)	19,150	(29.6)	2,001	(3.1)	6,868	(10.6)	1,678	(2.6)	1,979	(3.1)	341	(0.5)	64,596	(100.0)
2000/01	31,496	(47.7)	2,208	(3.3)	18,882	(28.6)	1,987	(3.0)	7,447	(11.3)	1,720	(2.6)	1,983	(3.0)	360	(0.5)	66,084	(100.0)
2001/02	33,259	(49.2)	2,370	(3.5)	18,196	(26.9)	2,055	(3.0)	7,264	(10.8)	1,801	(2.7)	2,224	(3.3)	368	(0.5)	67,539	(100.0)
2002/03	33,498	(50.1)	2,477	(3.7)	17,194	(25.7)	2,083	(3.1)	6,842	(10.2)	1,914	(2.9)	2,478	(3.7)	367	(0.5)	66,852	(100.0)
2003/04	34,293	(50.4)	2,531	(3.7)	16,667	(24.5)	2,010	(3.0)	6,760	(9.9)	2,872	(4.2)	2,555	(3.8)	355	(0.5)	68,043	(100.0)
2004/05	33,308	(49.6)	2,619	(3.9)	17,134	(25.5)	1,983	(3.0)	7,261	(10.8)	2,182	(3.3)	2,224	(3.3)	394	(0.6)	67,104	(100.0)
2005/06	34,823	(49.7)	2,700	(3.9)	17,917	(25.6)	2,030	(2.9)	7,564	(10.8)	2,199	(3.1)	2,412	(3.4)	418	(0.6)	70,062	(100.0)
2006/07	35,128	(48.9)	2,798	(3.9)	18,358	(25.5)	2,124	(3.0)	7,707	(10.7)	2,468	(3.4)	2,828	(3.9)	449	(0.6)	71,859	(100.0)
2007/08	38,239	(49.6)	2,998	(3.9)	19,166	(24.8)	2,271	(2.9)	8,265	(10.7)	2,429	(3.1)	3,304	(4.3)	484	(0.6)	77,156	(100.0)
2008/09	41,895	(50.6)	3,212	(3.9)	19,565	(23.6)	2,548	(3.1)	8,625	(10.4)	2,517	(3.0)	3,857	(4.7)	519	(0.6)	82,739	(100.0)
2009/10	43,355	(49.9)	3,494	(4.0)	21,142	(24.3)	2,690	(3.1)	8,731	(10.1)	2,801	(3.2)	4,057	(4.7)	573	(0.7)	86,843	(100.0)
2010/11	45,663	(49.9)	3,517	(3.8)	22,056	(24.1)	2,872	(3.1)	9,486	(10.4)	2,730	(3.0)	4,484	(4.9)	624	(0.7)	91,432	(100.0)
2011/12	50,230	(49.7)	3,817	(3.8)	24,362	(24.1)	3,152	(3.1)	10,562	(10.5)	2,980	(2.9)	5,229	(5.2)	702	(0.7)	101,034	(100.0)
2012/13	55,769	(50.0)	4,175	(3.7)	27,157	(24.3)	3,263	(2.9)	11,481	(10.3)	3,440	(3.1)	5,393	(4.8)	850	(0.8)	111,527	(100.0)
2013/14	60,339	(49.8)	4,585	(3.8)	30,334	(25.0)	3,490	(2.9)	12,117	(10.0)	3,863	(3.2)	5,534	(4.6)	1,003	(0.8)	121,265	(100.0)
2014/15	64,830	(49.6)	5,344	(4.1)	33,367	(25.5)	3,560	(2.7)	12,606	(9.6)	3,596	(2.7)	6,381	(4.9)	1,090	(0.8)	130,774	(100.0)
2015/16	70,476	(50.0)	5,913	(4.2)	35,446	(25.2)	3,777	(2.7)	13,326	(9.5)	3,807	(2.7)	7,162	(5.1)	926	(0.7)	140,833	(100.0)
2016/17	73,989	(50.1)	6,326	(4.3)	36,806	(24.9)	3,899	(2.6)	13,607	(9.2)	3,942	(2.7)	8,309	(5.6)	808	(0.5)	147,686	(100.0)
2017/18	78,868	(50.2)	6,709	(4.3)	38,245	(24.4)	4,027	(2.6)	14,696	(9.4)	4,216	(2.7)	9,433	(6.0)	833	(0.5)	157,026	(100.0)
2018/19	85,736	(50.4)	7,214	(4.2)	40,993	(24.1)	4,328	(2.5)	15,764	(9.3)	4,595	(2.7)	10,527	(6.2)	865	(0.5)	170,022	(100.0)

Note: Figures in brackets denote percentage of row total

**Table 3.2 Public current health expenditure by provider (at current market prices), 1989/90 – 2018/19**

Fiscal Year	Hospitals		Residential long-term care facilities		Providers of ambulatory health care		Providers of ancillary services		Retailers and other providers of medical goods		Providers of preventive care		Providers of health care system administration and financing		Rest of the world		Public current health expenditure	
	HK\$ million	(%)	HK\$ million	(%)	HK\$ million	(%)	HK\$ million	(%)	HK\$ million	(%)	HK\$ million	(%)	HK\$ million	(%)	HK\$ million	(%)	HK\$ million	(%)
1989/90	4,724	(70.2)	218	(3.2)	730	(10.8)	433	(6.4)	-	(-)	450	(6.7)	179	(2.7)	-	(-)	6,734	(100.0)
1990/91	6,155	(71.0)	275	(3.2)	931	(10.7)	556	(6.4)	#	(*)	562	(6.5)	192	(2.2)	-	(-)	8,669	(100.0)
1991/92	9,181	(76.0)	313	(2.6)	1,086	(9.0)	647	(5.4)	#	(*)	649	(5.4)	199	(1.7)	-	(-)	12,076	(100.0)
1992/93	11,126	(75.8)	391	(2.7)	1,235	(8.4)	735	(5.0)	#	(*)	722	(4.9)	464	(3.2)	-	(-)	14,673	(100.0)
1993/94	13,251	(76.7)	451	(2.6)	1,401	(8.1)	882	(5.1)	32	(0.2)	820	(4.7)	432	(2.5)	-	(-)	17,269	(100.0)
1994/95	15,589	(76.8)	577	(2.8)	1,624	(8.0)	995	(4.9)	64	(0.3)	923	(4.5)	531	(2.6)	-	(-)	20,304	(100.0)
1995/96	18,609	(77.8)	779	(3.3)	1,858	(7.8)	1,122	(4.7)	105	(0.4)	1,092	(4.6)	364	(1.5)	-	(-)	23,929	(100.0)
1996/97	21,886	(78.4)	1,015	(3.6)	2,138	(7.7)	1,229	(4.4)	150	(0.5)	1,241	(4.4)	258	(0.9)	-	(-)	27,917	(100.0)
1997/98	24,360	(77.5)	1,328	(4.2)	2,456	(7.8)	1,369	(4.4)	233	(0.7)	1,418	(4.5)	275	(0.9)	-	(-)	31,440	(100.0)
1998/99	26,458	(76.9)	1,516	(4.4)	2,810	(8.2)	1,481	(4.3)	229	(0.7)	1,590	(4.6)	303	(0.9)	-	(-)	34,388	(100.0)
1999/00	26,607	(76.1)	1,792	(5.1)	2,900	(8.3)	1,445	(4.1)	233	(0.7)	1,645	(4.7)	322	(0.9)	-	(-)	34,944	(100.0)
2000/01	27,373	(75.9)	1,898	(5.3)	3,055	(8.5)	1,477	(4.1)	248	(0.7)	1,681	(4.7)	335	(0.9)	-	(-)	36,066	(100.0)
2001/02	29,024	(75.9)	2,107	(5.5)	3,146	(8.2)	1,567	(4.1)	276	(0.7)	1,761	(4.6)	359	(0.9)	-	(-)	38,240	(100.0)
2002/03	29,273	(75.5)	2,184	(5.6)	3,182	(8.2)	1,626	(4.2)	282	(0.7)	1,873	(4.8)	362	(0.9)	-	(-)	38,781	(100.0)
2003/04	29,553	(75.0)	2,171	(5.5)	2,646	(6.7)	1,568	(4.0)	271	(0.7)	2,830	(7.2)	342	(0.9)	-	(-)	39,381	(100.0)
2004/05	27,841	(76.1)	2,153	(5.9)	2,359	(6.4)	1,530	(4.2)	281	(0.8)	2,130	(5.8)	285	(0.8)	-	(-)	36,580	(100.0)
2005/06	28,380	(76.2)	2,180	(5.9)	2,375	(6.4)	1,540	(4.1)	294	(0.8)	2,149	(5.8)	307	(0.8)	-	(-)	37,225	(100.0)
2006/07	27,327	(75.0)	2,244	(6.2)	2,366	(6.5)	1,536	(4.2)	272	(0.7)	2,417	(6.6)	295	(0.8)	-	(-)	36,457	(100.0)
2007/08	29,310	(75.7)	2,375	(6.1)	2,496	(6.5)	1,569	(4.1)	240	(0.6)	2,367	(6.1)	339	(0.9)	-	(-)	38,697	(100.0)
2008/09	31,523	(75.6)	2,551	(6.1)	2,793	(6.7)	1,746	(4.2)	258	(0.6)	2,460	(5.9)	385	(0.9)	-	(-)	41,717	(100.0)
2009/10	32,344	(74.0)	2,805	(6.4)	3,369	(7.7)	1,785	(4.1)	286	(0.7)	2,744	(6.3)	402	(0.9)	-	(-)	43,736	(100.0)
2010/11	33,528	(74.7)	2,843	(6.3)	3,187	(7.1)	1,852	(4.1)	299	(0.7)	2,674	(6.0)	522	(1.2)	-	(-)	44,904	(100.0)
2011/12	36,757	(74.5)	3,094	(6.3)	3,514	(7.1)	2,087	(4.2)	318	(0.6)	2,920	(5.9)	642	(1.3)	-	(-)	49,333	(100.0)
2012/13	40,573	(74.3)	3,410	(6.2)	3,980	(7.3)	2,199	(4.0)	334	(0.6)	3,379	(6.2)	716	(1.3)	-	(-)	54,591	(100.0)
2013/14	43,761	(73.8)	3,778	(6.4)	4,430	(7.5)	2,428	(4.1)	357	(0.6)	3,801	(6.4)	703	(1.2)	-	(-)	59,257	(100.0)
2014/15	47,401	(73.9)	4,367	(6.8)	5,164	(8.0)	2,538	(4.0)	378	(0.6)	3,536	(5.5)	790	(1.2)	-	(-)	64,174	(100.0)
2015/16	51,475	(73.4)	4,803	(6.8)	6,028	(8.6)	2,795	(4.0)	395	(0.6)	3,745	(5.3)	891	(1.3)	1	(*)	70,132	(100.0)
2016/17	53,712	(73.0)	5,136	(7.0)	6,433	(8.7)	2,905	(3.9)	420	(0.6)	3,879	(5.3)	1,079	(1.5)	1	(*)	73,565	(100.0)
2017/18	56,125	(72.2)	5,505	(7.1)	7,369	(9.5)	2,998	(3.9)	448	(0.6)	4,150	(5.3)	1,102	(1.4)	2	(*)	77,700	(100.0)
2018/19	61,141	(71.4)	5,872	(6.9)	9,187	(10.7)	3,236	(3.8)	473	(0.6)	4,521	(5.3)	1,152	(1.3)	4	(*)	85,586	(100.0)

Notes: Figures in brackets denote percentage of row total  
# less than HK\$0.5 million  
\* less than 0.05%  
- denotes nil



**Table 3.3 Private current health expenditure by provider (at current market prices), 1989/90 – 2018/19**

Fiscal Year	Hospitals		Residential long-term care facilities		Providers of ambulatory health care		Providers of ancillary services		Retailers and other providers of medical goods		Providers of preventive care		Providers of health care system administration and financing		Rest of the world		Private current health expenditure	
	HK\$ million	(%)	HK\$ million	(%)	HK\$ million	(%)	HK\$ million	(%)	HK\$ million	(%)	HK\$ million	(%)	HK\$ million	(%)	HK\$ million	(%)	HK\$ million	(%)
1989/90	1,470	(12.7)	131	(1.1)	6,968	(60.2)	199	(1.7)	2,309	(20.0)	11	(0.1)	407	(3.5)	75	(0.7)	11,570	(100.0)
1990/91	1,765	(13.1)	148	(1.1)	8,081	(60.2)	231	(1.7)	2,638	(19.6)	12	(0.1)	469	(3.5)	91	(0.7)	13,435	(100.0)
1991/92	2,130	(13.6)	166	(1.1)	9,544	(60.8)	278	(1.8)	2,918	(18.6)	13	(0.1)	549	(3.5)	111	(0.7)	15,709	(100.0)
1992/93	2,514	(13.9)	198	(1.1)	11,039	(61.2)	330	(1.8)	3,177	(17.6)	15	(0.1)	635	(3.5)	132	(0.7)	18,040	(100.0)
1993/94	2,783	(13.8)	197	(1.0)	12,476	(61.9)	390	(1.9)	3,428	(17.0)	19	(0.1)	718	(3.6)	153	(0.8)	20,163	(100.0)
1994/95	3,177	(14.0)	251	(1.1)	14,044	(61.8)	459	(2.0)	3,700	(16.3)	22	(0.1)	879	(3.9)	176	(0.8)	22,708	(100.0)
1995/96	3,416	(13.6)	247	(1.0)	15,357	(61.1)	524	(2.1)	4,057	(16.1)	26	(0.1)	1,313	(5.2)	203	(0.8)	25,142	(100.0)
1996/97	3,596	(13.0)	238	(0.9)	16,683	(60.2)	581	(2.1)	4,786	(17.3)	29	(0.1)	1,562	(5.6)	235	(0.8)	27,709	(100.0)
1997/98	3,901	(13.0)	177	(0.6)	17,691	(59.2)	621	(2.1)	5,595	(18.7)	33	(0.1)	1,612	(5.4)	278	(0.9)	29,907	(100.0)
1998/99	3,901	(13.1)	187	(0.6)	17,033	(57.1)	604	(2.0)	6,121	(20.5)	33	(0.1)	1,625	(5.4)	319	(1.1)	29,822	(100.0)
1999/00	3,933	(13.3)	247	(0.8)	16,251	(54.8)	556	(1.9)	6,635	(22.4)	33	(0.1)	1,657	(5.6)	341	(1.2)	29,653	(100.0)
2000/01	4,123	(13.7)	311	(1.0)	15,827	(52.7)	510	(1.7)	7,200	(24.0)	39	(0.1)	1,648	(5.5)	360	(1.2)	30,018	(100.0)
2001/02	4,235	(14.5)	263	(0.9)	15,050	(51.4)	489	(1.7)	6,988	(23.9)	40	(0.1)	1,865	(6.4)	368	(1.3)	29,298	(100.0)
2002/03	4,225	(15.1)	293	(1.0)	14,012	(49.9)	456	(1.6)	6,560	(23.4)	41	(0.1)	2,116	(7.5)	367	(1.3)	28,071	(100.0)
2003/04	4,740	(16.5)	359	(1.3)	14,021	(48.9)	441	(1.5)	6,489	(22.6)	43	(0.1)	2,213	(7.7)	355	(1.2)	28,662	(100.0)
2004/05	5,468	(17.9)	466	(1.5)	14,775	(48.4)	453	(1.5)	6,979	(22.9)	52	(0.2)	1,939	(6.4)	394	(1.3)	30,524	(100.0)
2005/06	6,442	(19.6)	520	(1.6)	15,542	(47.3)	489	(1.5)	7,269	(22.1)	50	(0.2)	2,105	(6.4)	418	(1.3)	32,837	(100.0)
2006/07	7,801	(22.0)	553	(1.6)	15,992	(45.2)	588	(1.7)	7,435	(21.0)	51	(0.1)	2,533	(7.2)	449	(1.3)	35,402	(100.0)
2007/08	8,929	(23.2)	622	(1.6)	16,670	(43.3)	703	(1.8)	8,025	(20.9)	61	(0.2)	2,965	(7.7)	484	(1.3)	38,459	(100.0)
2008/09	10,372	(25.3)	661	(1.6)	16,772	(40.9)	802	(2.0)	8,367	(20.4)	57	(0.1)	3,472	(8.5)	519	(1.3)	41,023	(100.0)
2009/10	11,011	(25.5)	689	(1.6)	17,773	(41.2)	905	(2.1)	8,445	(19.6)	56	(0.1)	3,654	(8.5)	573	(1.3)	43,107	(100.0)
2010/11	12,135	(26.1)	674	(1.4)	18,869	(40.6)	1,021	(2.2)	9,187	(19.7)	56	(0.1)	3,962	(8.5)	624	(1.3)	46,527	(100.0)
2011/12	13,473	(26.1)	722	(1.4)	20,848	(40.3)	1,065	(2.1)	10,244	(19.8)	60	(0.1)	4,586	(8.9)	702	(1.4)	51,701	(100.0)
2012/13	15,196	(26.7)	765	(1.3)	23,176	(40.7)	1,064	(1.9)	11,147	(19.6)	61	(0.1)	4,677	(8.2)	850	(1.5)	56,936	(100.0)
2013/14	16,578	(26.7)	808	(1.3)	25,904	(41.8)	1,061	(1.7)	11,760	(19.0)	63	(0.1)	4,831	(7.8)	1,003	(1.6)	62,008	(100.0)
2014/15	17,429	(26.2)	977	(1.5)	28,204	(42.3)	1,021	(1.5)	12,228	(18.4)	60	(0.1)	5,591	(8.4)	1,090	(1.6)	66,600	(100.0)
2015/16	19,001	(26.9)	1,111	(1.6)	29,419	(41.6)	982	(1.4)	12,931	(18.3)	62	(0.1)	6,271	(8.9)	925	(1.3)	70,701	(100.0)
2016/17	20,278	(27.4)	1,190	(1.6)	30,373	(41.0)	993	(1.3)	13,186	(17.8)	63	(0.1)	7,230	(9.8)	807	(1.1)	74,120	(100.0)
2017/18	22,743	(28.7)	1,204	(1.5)	30,875	(38.9)	1,029	(1.3)	14,248	(18.0)	66	(0.1)	8,331	(10.5)	831	(1.0)	79,327	(100.0)
2018/19	24,596	(29.1)	1,341	(1.6)	31,806	(37.7)	1,092	(1.3)	15,291	(18.1)	74	(0.1)	9,375	(11.1)	861	(1.0)	84,436	(100.0)

Note: Figures in brackets denote percentage of row total

**Table 4.1 Current health expenditure by function (at current market prices), 1989/90 – 2018/19**

Fiscal Year	Curative care										Rehabilitative care	Long-term care (health)	Ancillary services	Medical goods	Preventive care	Governance, and health system and financing administration / Other health care services not elsewhere classified	Current health expenditure							
	All		Inpatient curative care		Day curative care		Outpatient curative care		Home-based curative care															
	HK\$ million	(%)	HK\$ million	(%)	HK\$ million	(%)	HK\$ million	(%)	HK\$ million	(%)														
1989/90	12,840	(70.2)	4,283	(23.4)	498	(2.7)	8,059	(44.0)	-	(-)	728	(4.0)	568	(3.1)	632	(3.5)	2,455	(13.4)	494	(2.7)	586	(3.2)	18,303	(100.0)
1990/91	15,573	(70.5)	5,467	(24.7)	643	(2.9)	9,464	(42.8)	-	(-)	948	(4.3)	711	(3.2)	786	(3.6)	2,816	(12.7)	610	(2.8)	661	(3.0)	22,105	(100.0)
1991/92	20,055	(72.2)	7,410	(26.7)	885	(3.2)	11,759	(42.3)	-	(-)	1,299	(4.7)	900	(3.2)	924	(3.3)	3,156	(11.4)	703	(2.5)	748	(2.7)	27,785	(100.0)
1992/93	23,660	(72.3)	8,775	(26.8)	1,042	(3.2)	13,823	(42.3)	19	(0.1)	1,567	(4.8)	1,069	(3.3)	1,065	(3.3)	3,485	(10.7)	768	(2.3)	1,099	(3.4)	32,713	(100.0)
1993/94	27,091	(72.4)	10,165	(27.2)	1,200	(3.2)	15,704	(42.0)	21	(0.1)	1,892	(5.1)	1,305	(3.5)	1,271	(3.4)	3,848	(10.3)	874	(2.3)	1,151	(3.1)	37,433	(100.0)
1994/95	31,093	(72.3)	11,821	(27.5)	1,408	(3.3)	17,837	(41.5)	27	(0.1)	2,214	(5.1)	1,601	(3.7)	1,454	(3.4)	4,242	(9.9)	998	(2.3)	1,411	(3.3)	43,011	(100.0)
1995/96	35,288	(71.9)	13,674	(27.9)	1,636	(3.3)	19,939	(40.6)	39	(0.1)	2,677	(5.5)	1,932	(3.9)	1,646	(3.4)	4,704	(9.6)	1,147	(2.3)	1,677	(3.4)	49,072	(100.0)
1996/97	39,728	(71.4)	15,814	(28.4)	1,846	(3.3)	21,924	(39.4)	144	(0.3)	3,153	(5.7)	2,335	(4.2)	1,810	(3.3)	5,469	(9.8)	1,311	(2.4)	1,820	(3.3)	55,626	(100.0)
1997/98	43,332	(70.6)	17,601	(28.7)	1,870	(3.0)	23,668	(38.6)	192	(0.3)	3,691	(6.0)	2,650	(4.3)	1,990	(3.2)	6,307	(10.3)	1,490	(2.4)	1,886	(3.1)	61,347	(100.0)
1998/99	44,735	(69.7)	18,631	(29.0)	2,030	(3.2)	23,845	(37.1)	229	(0.4)	4,119	(6.4)	2,988	(4.7)	2,085	(3.2)	6,691	(10.4)	1,664	(2.6)	1,928	(3.0)	64,210	(100.0)
1999/00	44,133	(68.3)	18,387	(28.5)	2,076	(3.2)	23,433	(36.3)	238	(0.4)	4,327	(6.7)	3,374	(5.2)	2,001	(3.1)	7,056	(10.9)	1,727	(2.7)	1,979	(3.1)	64,596	(100.0)
2000/01	44,750	(67.7)	18,794	(28.4)	2,307	(3.5)	23,319	(35.3)	331	(0.5)	4,483	(6.8)	3,586	(5.4)	1,987	(3.0)	7,513	(11.4)	1,781	(2.7)	1,983	(3.0)	66,084	(100.0)
2001/02	45,507	(67.4)	19,490	(28.9)	2,526	(3.7)	23,145	(34.3)	345	(0.5)	4,825	(7.1)	3,758	(5.6)	2,055	(3.0)	7,331	(10.9)	1,838	(2.7)	2,224	(3.3)	67,539	(100.0)
2002/03	44,628	(66.8)	19,403	(29.0)	2,605	(3.9)	22,239	(33.3)	381	(0.6)	4,809	(7.2)	3,988	(6.0)	2,083	(3.1)	6,906	(10.3)	1,960	(2.9)	2,478	(3.7)	66,852	(100.0)
2003/04	44,847	(65.9)	19,696	(28.9)	2,412	(3.5)	22,359	(32.9)	380	(0.6)	4,879	(7.2)	4,008	(5.9)	2,010	(3.0)	6,825	(10.0)	2,920	(4.3)	2,555	(3.8)	68,043	(100.0)
2004/05	44,810	(66.8)	19,507	(29.1)	2,365	(3.5)	22,536	(33.6)	403	(0.6)	4,702	(7.0)	3,818	(5.7)	1,983	(3.0)	7,330	(10.9)	2,236	(3.3)	2,224	(3.3)	67,104	(100.0)
2005/06	46,983	(67.1)	20,507	(29.3)	2,511	(3.6)	23,536	(33.6)	430	(0.6)	4,780	(6.8)	3,962	(5.7)	2,030	(2.9)	7,638	(10.9)	2,256	(3.2)	2,412	(3.4)	70,062	(100.0)
2006/07	47,812	(66.5)	21,044	(29.3)	2,565	(3.6)	23,787	(33.1)	414	(0.6)	4,822	(6.7)	3,955	(5.5)	2,124	(3.0)	7,791	(10.8)	2,529	(3.5)	2,828	(3.9)	71,859	(100.0)
2007/08	51,402	(66.6)	22,988	(29.8)	2,962	(3.8)	25,013	(32.4)	439	(0.6)	5,187	(6.7)	4,144	(5.4)	2,271	(2.9)	8,359	(10.8)	2,489	(3.2)	3,304	(4.3)	77,156	(100.0)
2008/09	55,169	(66.7)	25,066	(30.3)	3,432	(4.1)	26,183	(31.6)	488	(0.6)	5,554	(6.7)	4,291	(5.2)	2,548	(3.1)	8,724	(10.5)	2,596	(3.1)	3,857	(4.7)	82,739	(100.0)
2009/10	57,696	(66.4)	25,165	(29.0)	3,846	(4.4)	28,166	(32.4)	519	(0.6)	5,686	(6.5)	4,577	(5.3)	2,690	(3.1)	8,833	(10.2)	3,305	(3.8)	4,057	(4.7)	86,843	(100.0)
2010/11	60,983	(66.7)	26,088	(28.5)	4,082	(4.5)	30,266	(33.1)	547	(0.6)	5,895	(6.4)	4,720	(5.2)	2,872	(3.1)	9,601	(10.5)	2,875	(3.1)	4,484	(4.9)	91,432	(100.0)
2011/12	67,102	(66.4)	28,507	(28.2)	4,676	(4.6)	33,351	(33.0)	569	(0.6)	6,647	(6.6)	5,077	(5.0)	3,152	(3.1)	10,702	(10.6)	3,125	(3.1)	5,229	(5.2)	101,034	(100.0)
2012/13	74,618	(66.9)	31,785	(28.5)	5,201	(4.7)	37,047	(33.2)	585	(0.5)	7,286	(6.5)	5,679	(5.1)	3,263	(2.9)	11,645	(10.4)	3,644	(3.3)	5,393	(4.8)	111,527	(100.0)
2013/14	81,791	(67.4)	34,435	(28.4)	5,667	(4.7)	41,044	(33.8)	645	(0.5)	7,815	(6.4)	6,227	(5.1)	3,490	(2.9)	12,305	(10.1)	4,104	(3.4)	5,534	(4.6)	121,265	(100.0)
2014/15	88,572	(67.7)	36,782	(28.1)	6,307	(4.8)	44,816	(34.3)	666	(0.5)	8,526	(6.5)	7,042	(5.4)	3,560	(2.7)	12,823	(9.8)	3,867	(3.0)	6,385	(4.9)	130,774	(100.0)
2015/16	95,380	(67.7)	40,020	(28.4)	6,778	(4.8)	47,868	(34.0)	714	(0.5)	9,277	(6.6)	7,602	(5.4)	3,777	(2.7)	13,617	(9.7)	4,007	(2.8)	7,173	(5.1)	140,833	(100.0)
2016/17	99,218	(67.2)	41,654	(28.2)	7,280	(4.9)	49,515	(33.5)	768	(0.5)	9,852	(6.7)	8,100	(5.5)	3,899	(2.6)	14,023	(9.5)	4,129	(2.8)	8,465	(5.7)	147,686	(100.0)
2017/18	103,616	(66.0)	43,965	(28.0)	7,635	(4.9)	51,206	(32.6)	810	(0.5)	10,449	(6.7)	8,493	(5.4)	4,027	(2.6)	15,358	(9.8)	4,467	(2.8)	10,617	(6.8)	157,026	(100.0)
2018/19	111,463	(65.6)	47,521	(27.9)	8,621	(5.1)	54,458	(32.0)	864	(0.5)	11,227	(6.6)	9,103	(5.4)	4,328	(2.5)	16,881	(9.9)	4,972	(2.9)	12,047	(7.1)	170,022	(100.0)

Notes: Figures in brackets denote percentage of row total  
- denotes nil

**Table 4.2 Public current health expenditure by function (at current market prices), 1989/90 – 2018/19**

Fiscal Year	Curative care										Rehabilitative care	Long-term care (health)	Ancillary services	Medical goods	Preventive care	Governance, and health system and financing administration / Other health care services not elsewhere classified	Public current health expenditure							
	All		Inpatient curative care		Day curative care		Outpatient curative care		Home-based curative care															
	HK\$ million	(%)	HK\$ million	(%)	HK\$ million	(%)	HK\$ million	(%)	HK\$ million	(%)														
1989/90	4,718	(70.1)	2,988	(44.4)	419	(6.2)	1,312	(19.5)	-	(-)	548	(8.1)	426	(6.3)	433	(6.4)	-	(-)	429	(6.4)	179	(2.7)	6,734	(100.0)
1990/91	6,096	(70.3)	3,916	(45.2)	548	(6.3)	1,633	(18.8)	-	(-)	738	(8.5)	549	(6.3)	556	(6.4)	#	(*)	539	(6.2)	192	(2.2)	8,669	(100.0)
1991/92	8,841	(73.2)	5,537	(45.9)	772	(6.4)	2,532	(21.0)	-	(-)	1,054	(8.7)	716	(5.9)	647	(5.4)	#	(*)	619	(5.1)	199	(1.7)	12,076	(100.0)
1992/93	10,661	(72.7)	6,541	(44.6)	908	(6.2)	3,193	(21.8)	19	(0.1)	1,289	(8.8)	853	(5.8)	735	(5.0)	#	(*)	670	(4.6)	464	(3.2)	14,673	(100.0)
1993/94	12,490	(72.3)	7,678	(44.5)	1,049	(6.1)	3,741	(21.7)	21	(0.1)	1,580	(9.2)	1,087	(6.3)	882	(5.1)	32	(0.2)	766	(4.4)	432	(2.5)	17,269	(100.0)
1994/95	14,651	(72.2)	9,025	(44.4)	1,240	(6.1)	4,360	(21.5)	27	(0.1)	1,863	(9.2)	1,324	(6.5)	995	(4.9)	64	(0.3)	875	(4.3)	531	(2.6)	20,304	(100.0)
1995/96	17,366	(72.6)	10,669	(44.6)	1,458	(6.1)	5,200	(21.7)	39	(0.2)	2,297	(9.6)	1,659	(6.9)	1,122	(4.7)	105	(0.4)	1,015	(4.2)	364	(1.5)	23,929	(100.0)
1996/97	20,398	(73.1)	12,636	(45.3)	1,658	(5.9)	5,961	(21.4)	144	(0.5)	2,647	(9.5)	2,069	(7.4)	1,229	(4.4)	150	(0.5)	1,167	(4.2)	258	(0.9)	27,917	(100.0)
1997/98	22,752	(72.4)	14,123	(44.9)	1,669	(5.3)	6,767	(21.5)	192	(0.6)	3,034	(9.6)	2,442	(7.8)	1,369	(4.4)	233	(0.7)	1,335	(4.2)	275	(0.9)	31,440	(100.0)
1998/99	24,752	(72.0)	15,144	(44.0)	1,828	(5.3)	7,551	(22.0)	229	(0.7)	3,344	(9.7)	2,767	(8.0)	1,481	(4.3)	229	(0.7)	1,512	(4.4)	303	(0.9)	34,388	(100.0)
1999/00	24,826	(71.0)	14,868	(42.5)	1,879	(5.4)	7,842	(22.4)	237	(0.7)	3,451	(9.9)	3,089	(8.8)	1,445	(4.1)	233	(0.7)	1,577	(4.5)	322	(0.9)	34,944	(100.0)
2000/01	25,662	(71.2)	15,085	(41.8)	2,105	(5.8)	8,141	(22.6)	331	(0.9)	3,494	(9.7)	3,232	(9.0)	1,477	(4.1)	248	(0.7)	1,617	(4.5)	335	(0.9)	36,066	(100.0)
2001/02	27,093	(70.8)	15,714	(41.1)	2,319	(6.1)	8,715	(22.8)	345	(0.9)	3,822	(10.0)	3,448	(9.0)	1,567	(4.1)	276	(0.7)	1,675	(4.4)	359	(0.9)	38,240	(100.0)
2002/03	27,218	(70.2)	15,692	(40.5)	2,395	(6.2)	8,750	(22.6)	381	(1.0)	3,840	(9.9)	3,658	(9.4)	1,626	(4.2)	282	(0.7)	1,796	(4.6)	362	(0.9)	38,781	(100.0)
2003/04	26,974	(68.5)	15,789	(40.1)	2,195	(5.6)	8,611	(21.9)	380	(1.0)	3,868	(9.8)	3,605	(9.2)	1,568	(4.0)	271	(0.7)	2,753	(7.0)	342	(0.9)	39,381	(100.0)
2004/05	25,498	(69.7)	14,912	(40.8)	2,114	(5.8)	8,070	(22.1)	401	(1.1)	3,621	(9.9)	3,312	(9.1)	1,530	(4.2)	281	(0.8)	2,052	(5.6)	285	(0.8)	36,580	(100.0)
2005/06	25,959	(69.7)	15,064	(40.5)	2,218	(6.0)	8,248	(22.2)	429	(1.2)	3,655	(9.8)	3,400	(9.1)	1,540	(4.1)	294	(0.8)	2,071	(5.6)	307	(0.8)	37,225	(100.0)
2006/07	25,045	(68.7)	14,459	(39.7)	2,237	(6.1)	7,937	(21.8)	413	(1.1)	3,611	(9.9)	3,358	(9.2)	1,536	(4.2)	272	(0.7)	2,340	(6.4)	295	(0.8)	36,457	(100.0)
2007/08	26,885	(69.5)	15,410	(39.8)	2,581	(6.7)	8,457	(21.9)	437	(1.1)	3,896	(10.1)	3,480	(9.0)	1,569	(4.1)	240	(0.6)	2,288	(5.9)	339	(0.9)	38,697	(100.0)
2008/09	29,117	(69.8)	16,154	(38.7)	3,036	(7.3)	9,443	(22.6)	484	(1.2)	4,241	(10.2)	3,588	(8.6)	1,746	(4.2)	258	(0.6)	2,383	(5.7)	385	(0.9)	41,717	(100.0)
2009/10	30,030	(68.7)	15,796	(36.1)	3,370	(7.7)	10,349	(23.7)	515	(1.2)	4,345	(9.9)	3,845	(8.8)	1,785	(4.1)	286	(0.7)	3,043	(7.0)	402	(0.9)	43,736	(100.0)
2010/11	31,159	(69.4)	15,607	(34.8)	3,706	(8.3)	11,303	(25.2)	542	(1.2)	4,461	(9.9)	4,000	(8.9)	1,852	(4.1)	299	(0.7)	2,612	(5.8)	522	(1.2)	44,904	(100.0)
2011/12	34,102	(69.1)	16,828	(34.1)	4,272	(8.7)	12,437	(25.2)	564	(1.1)	5,033	(10.2)	4,309	(8.7)	2,087	(4.2)	318	(0.6)	2,841	(5.8)	642	(1.3)	49,333	(100.0)
2012/13	37,621	(68.9)	18,477	(33.8)	4,706	(8.6)	13,858	(25.4)	580	(1.1)	5,535	(10.1)	4,865	(8.9)	2,199	(4.0)	335	(0.6)	3,321	(6.1)	716	(1.3)	54,591	(100.0)
2013/14	40,782	(68.8)	19,777	(33.4)	5,180	(8.7)	15,181	(25.6)	643	(1.1)	5,880	(9.9)	5,369	(9.1)	2,428	(4.1)	357	(0.6)	3,738	(6.3)	703	(1.2)	59,257	(100.0)
2014/15	44,570	(69.5)	21,438	(33.4)	5,791	(9.0)	16,679	(26.0)	662	(1.0)	6,400	(10.0)	6,008	(9.4)	2,538	(4.0)	380	(0.6)	3,488	(5.4)	790	(1.2)	64,174	(100.0)
2015/16	48,886	(69.7)	23,424	(33.4)	6,219	(8.9)	18,533	(26.4)	710	(1.0)	6,996	(10.0)	6,435	(9.2)	2,795	(4.0)	444	(0.6)	3,685	(5.3)	891	(1.3)	70,132	(100.0)
2016/17	50,699	(68.9)	24,096	(32.8)	6,623	(9.0)	19,216	(26.1)	764	(1.0)	7,478	(10.2)	6,850	(9.3)	2,905	(3.9)	577	(0.8)	3,843	(5.2)	1,213	(1.6)	73,565	(100.0)
2017/18	53,221	(68.5)	25,347	(32.6)	6,904	(8.9)	20,163	(25.9)	808	(1.0)	7,900	(10.2)	7,222	(9.3)	2,998	(3.9)	821	(1.1)	4,160	(5.4)	1,378	(1.8)	77,700	(100.0)
2018/19	58,407	(68.2)	27,381	(32.0)	7,669	(9.0)	22,495	(26.3)	862	(1.0)	8,557	(10.0)	7,696	(9.0)	3,236	(3.8)	1,276	(1.5)	4,642	(5.4)	1,772	(2.1)	85,586	(100.0)

Notes: Figures in brackets denote percentage of row total  
# less than HK\$0.5 million  
\* less than 0.05%  
- denotes nil

**Table 4.3 Private current health expenditure by function (at current market prices), 1989/90 – 2018/19**

Fiscal Year	Curative care					Rehabilitative care	Long-term care (health)	Ancillary services	Medical goods	Preventive care	Governance, and health system and financing administration / Other health care services not elsewhere classified	Private current health expenditure
	All	Inpatient curative care	Day curative care	Outpatient curative care	Home-based curative care							
	HK\$ million (%)	HK\$ million (%)	HK\$ million (%)	HK\$ million (%)	HK\$ million (%)							
1989/90	8,122 (70.2)	1,295 (11.2)	79 (0.7)	6,747 (58.3)	- (-)	180 (1.6)	143 (1.2)	199 (1.7)	2,455 (21.2)	64 (0.6)	407 (3.5)	11,570 (100.0)
1990/91	9,477 (70.5)	1,551 (11.5)	95 (0.7)	7,831 (58.3)	- (-)	210 (1.6)	162 (1.2)	231 (1.7)	2,816 (21.0)	71 (0.5)	469 (3.5)	13,435 (100.0)
1991/92	11,214 (71.4)	1,873 (11.9)	114 (0.7)	9,228 (58.7)	- (-)	245 (1.6)	183 (1.2)	278 (1.8)	3,156 (20.1)	83 (0.5)	549 (3.5)	15,709 (100.0)
1992/93	12,998 (72.1)	2,234 (12.4)	134 (0.7)	10,630 (58.9)	- (-)	279 (1.5)	216 (1.2)	330 (1.8)	3,485 (19.3)	97 (0.5)	635 (3.5)	18,040 (100.0)
1993/94	14,601 (72.4)	2,487 (12.3)	151 (0.8)	11,963 (59.3)	- (-)	312 (1.5)	218 (1.1)	390 (1.9)	3,815 (18.9)	108 (0.5)	718 (3.6)	20,163 (100.0)
1994/95	16,441 (72.4)	2,796 (12.3)	168 (0.7)	13,477 (59.4)	- (-)	351 (1.5)	277 (1.2)	459 (2.0)	4,178 (18.4)	122 (0.5)	879 (3.9)	22,708 (100.0)
1995/96	17,921 (71.3)	3,004 (11.9)	178 (0.7)	14,739 (58.6)	- (-)	380 (1.5)	273 (1.1)	524 (2.1)	4,599 (18.3)	132 (0.5)	1,313 (5.2)	25,142 (100.0)
1996/97	19,330 (69.8)	3,178 (11.5)	188 (0.7)	15,963 (57.6)	# (*)	506 (1.8)	266 (1.0)	581 (2.1)	5,320 (19.2)	144 (0.5)	1,562 (5.6)	27,709 (100.0)
1997/98	20,580 (68.8)	3,478 (11.6)	201 (0.7)	16,901 (56.5)	# (*)	657 (2.2)	209 (0.7)	621 (2.1)	6,073 (20.3)	155 (0.5)	1,612 (5.4)	29,907 (100.0)
1998/99	19,983 (67.0)	3,487 (11.7)	202 (0.7)	16,294 (54.6)	# (*)	775 (2.6)	222 (0.7)	604 (2.0)	6,462 (21.7)	152 (0.5)	1,625 (5.4)	29,822 (100.0)
1999/00	19,307 (65.1)	3,519 (11.9)	197 (0.7)	15,591 (52.6)	# (*)	876 (3.0)	284 (1.0)	556 (1.9)	6,823 (23.0)	150 (0.5)	1,657 (5.6)	29,653 (100.0)
2000/01	19,088 (63.6)	3,709 (12.4)	202 (0.7)	15,177 (50.6)	1 (*)	988 (3.3)	354 (1.2)	510 (1.7)	7,266 (24.2)	164 (0.5)	1,648 (5.5)	30,018 (100.0)
2001/02	18,414 (62.9)	3,776 (12.9)	207 (0.7)	14,430 (49.3)	1 (*)	1,002 (3.4)	309 (1.1)	489 (1.7)	7,055 (24.1)	164 (0.6)	1,865 (6.4)	29,298 (100.0)
2002/03	17,410 (62.0)	3,710 (13.2)	210 (0.7)	13,489 (48.1)	# (*)	969 (3.5)	330 (1.2)	456 (1.6)	6,625 (23.6)	164 (0.6)	2,116 (7.5)	28,071 (100.0)
2003/04	17,873 (62.4)	3,907 (13.6)	217 (0.8)	13,749 (48.0)	# (*)	1,010 (3.5)	403 (1.4)	441 (1.5)	6,554 (22.9)	166 (0.6)	2,213 (7.7)	28,662 (100.0)
2004/05	19,313 (63.3)	4,594 (15.1)	250 (0.8)	14,467 (47.4)	2 (*)	1,081 (3.5)	506 (1.7)	453 (1.5)	7,049 (23.1)	184 (0.6)	1,939 (6.4)	30,524 (100.0)
2005/06	21,025 (64.0)	5,443 (16.6)	292 (0.9)	15,288 (46.6)	1 (*)	1,125 (3.4)	562 (1.7)	489 (1.5)	7,344 (22.4)	186 (0.6)	2,105 (6.4)	32,837 (100.0)
2006/07	22,766 (64.3)	6,585 (18.6)	329 (0.9)	15,851 (44.8)	2 (*)	1,211 (3.4)	597 (1.7)	588 (1.7)	7,519 (21.2)	188 (0.5)	2,533 (7.2)	35,402 (100.0)
2007/08	24,517 (63.7)	7,578 (19.7)	381 (1.0)	16,556 (43.0)	2 (*)	1,290 (3.4)	664 (1.7)	703 (1.8)	8,119 (21.1)	200 (0.5)	2,965 (7.7)	38,459 (100.0)
2008/09	26,052 (63.5)	8,912 (21.7)	396 (1.0)	16,741 (40.8)	3 (*)	1,313 (3.2)	704 (1.7)	802 (2.0)	8,466 (20.6)	214 (0.5)	3,472 (8.5)	41,023 (100.0)
2009/10	27,666 (64.2)	9,369 (21.7)	475 (1.1)	17,818 (41.3)	4 (*)	1,341 (3.1)	733 (1.7)	905 (2.1)	8,547 (19.8)	261 (0.6)	3,654 (8.5)	43,107 (100.0)
2010/11	29,824 (64.1)	10,481 (22.5)	376 (0.8)	18,962 (40.8)	4 (*)	1,434 (3.1)	721 (1.5)	1,021 (2.2)	9,302 (20.0)	263 (0.6)	3,962 (8.5)	46,527 (100.0)
2011/12	33,001 (63.8)	11,679 (22.6)	404 (0.8)	20,914 (40.5)	4 (*)	1,614 (3.1)	768 (1.5)	1,065 (2.1)	10,383 (20.1)	284 (0.5)	4,586 (8.9)	51,701 (100.0)
2012/13	36,996 (65.0)	13,308 (23.4)	495 (0.9)	23,189 (40.7)	5 (*)	1,751 (3.1)	815 (1.4)	1,064 (1.9)	11,310 (19.9)	323 (0.6)	4,677 (8.2)	56,936 (100.0)
2013/14	41,009 (66.1)	14,658 (23.6)	487 (0.8)	25,863 (41.7)	3 (*)	1,935 (3.1)	857 (1.4)	1,061 (1.7)	11,948 (19.3)	365 (0.6)	4,831 (7.8)	62,008 (100.0)
2014/15	44,001 (66.1)	15,344 (23.0)	516 (0.8)	28,137 (42.2)	4 (*)	2,126 (3.2)	1,033 (1.6)	1,021 (1.5)	12,444 (18.7)	380 (0.6)	5,595 (8.4)	66,600 (100.0)
2015/16	46,494 (65.8)	16,596 (23.5)	559 (0.8)	29,335 (41.5)	4 (*)	2,281 (3.2)	1,167 (1.7)	982 (1.4)	13,173 (18.6)	322 (0.5)	6,282 (8.9)	70,701 (100.0)
2016/17	48,518 (65.5)	17,558 (23.7)	657 (0.9)	30,300 (40.9)	4 (*)	2,374 (3.2)	1,250 (1.7)	993 (1.3)	13,447 (18.1)	286 (0.4)	7,252 (9.8)	74,120 (100.0)
2017/18	50,394 (63.5)	18,618 (23.5)	731 (0.9)	31,043 (39.1)	2 (*)	2,550 (3.2)	1,271 (1.6)	1,029 (1.3)	14,537 (18.3)	307 (0.4)	9,239 (11.6)	79,327 (100.0)
2018/19	53,057 (62.8)	20,140 (23.9)	952 (1.1)	31,963 (37.9)	2 (*)	2,670 (3.2)	1,407 (1.7)	1,092 (1.3)	15,605 (18.5)	330 (0.4)	10,274 (12.2)	84,436 (100.0)

Notes: Figures in brackets denote percentage of row total  
# less than HK\$0.5 million  
\* less than 0.05%  
- denotes nil

**Table 4.4 Expenditure on health care related functions and capital account (at current market prices), 1989/90 – 2018/19**

(HK\$ million)

Fiscal Year	Health care related functions			Capital account		
	Long-term care (social)	Food and drinking water control	Environmental interventions (excluding those related to food and drinking)	Gross fixed capital formation	Research and development in health	Education and training of health personnel
1989/90	284	61	309	1,721	183	561
1990/91	339	101	355	2,145	219	683
1991/92	380	116	473	2,284	254	839
1992/93	464	138	640	2,242	290	871
1993/94	509	163	999	3,165	359	1,080
1994/95	672	182	1,458	3,239	446	1,287
1995/96	835	205	1,820	3,893	551	1,582
1996/97	1,026	245	1,979	3,618	605	1,824
1997/98	1,157	283	2,241	3,350	827	2,105
1998/99	1,321	345	2,353	4,098	1,047	2,108
1999/00	1,487	305	2,325	3,080	1,110	2,237
2000/01	1,638	228	2,681	3,064	1,152	2,289
2001/02	1,796	227	2,727	2,947	1,184	2,101
2002/03	1,871	228	2,599	1,320	1,252	1,614
2003/04	1,901	196	2,535	2,320	1,351	1,479
2004/05	1,953	183	2,386	2,246	1,372	1,414
2005/06	1,952	192	2,303	2,640	1,448	1,432
2006/07	1,968	184	2,239	3,141	1,544	1,512
2007/08	2,029	229	2,490	3,522	1,783	1,617
2008/09	2,096	256	2,783	3,156	1,983	1,743
2009/10	2,236	266	2,526	3,692	2,075	1,752
2010/11	2,249	269	2,570	4,426	2,187	1,780
2011/12	2,346	291	2,739	5,358	2,590	1,877
2012/13	2,552	321	3,017	5,106	3,125	2,028
2013/14	2,785	318	3,284	6,664	3,266	2,175
2014/15	3,332	339	6,466	6,734	3,475	2,385
2015/16	3,493	354	5,924	7,163	3,696	2,585
2016/17	3,725	442	5,328	9,233	3,946	2,602
2017/18	3,938	464	5,634	9,863	4,153	2,655
2018/19	4,282	521	5,618	7,425	4,486	2,826

**Table 4.5 Public and private share of current health expenditure by health care function (at current market prices), 2018/19**

Health care function	Public		Private		Current health expenditure	
	HK\$ million	(%)	HK\$ million	(%)	HK\$ million	(%)
Curative care	58,407	(52.4)	53,057	(47.6)	111,463	(100.0)
- <i>Inpatient curative care</i>	27,381	(57.6)	20,140	(42.4)	47,521	(100.0)
- <i>Day curative care</i>	7,669	(89.0)	952	(11.0)	8,621	(100.0)
- <i>Outpatient curative care</i>	22,495	(41.3)	31,963	(58.7)	54,458	(100.0)
- <i>Home-based curative care</i>	862	(99.8)	2	(0.2)	864	(100.0)
Rehabilitative care	8,557	(76.2)	2,670	(23.8)	11,227	(100.0)
Long-term care (health)	7,696	(84.5)	1,407	(15.5)	9,103	(100.0)
Ancillary services	3,236	(74.8)	1,092	(25.2)	4,328	(100.0)
Medical goods	1,276	(7.6)	15,605	(92.4)	16,881	(100.0)
Preventive care	4,642	(93.4)	330	(6.6)	4,972	(100.0)
Governance, and health system and financing administration / Other health care services not elsewhere classified	1,772	(14.7)	10,274	(85.3)	12,047	(100.0)
<b>Current health expenditure</b>	<b>85,586</b>	<b>(50.3)</b>	<b>84,436</b>	<b>(49.7)</b>	<b>170,022</b>	<b>(100.0)</b>

Note: Figures in brackets denote percentage of row total

**Table 5.1 Comparison on health expenditure between Hong Kong and selected economies**

Economy	Reference period	National (or Domestic) Health Accounts				Other reference		
		Current expenditure on health as a % of GDP (%)			Current public health expenditure as a % of total tax revenue (%)	Total public expenditure as a % of GDP (%)	Highest marginal personal income tax rate* (%)	Sales tax rate (%)
		Total	Public	Private				
United States	2018	16.9	14.3	2.6	58.8	37.8	43.7	2.9 - 7.25 <sup>#</sup>
Switzerland	2018	12.2	7.8	4.4	27.8	33.7	36.0	7.7
Germany	2018	11.2	9.5	1.7	24.8	44.6	47.5	19
France	2018	11.2	9.3	1.9	20.2	55.8	55.2	20
Japan	2018	10.9	9.2	1.7	28.1	38.8	55.8	8
Canada	2018	10.7	7.8	2.9	23.7	41.8	53.5	5 - 15
Austria	2018	10.3	7.7	2.6	18.3	48.7	55.0	20
United Kingdom	2018	9.8	7.5	2.2	22.5	40.9	45.0	20
Australia	2018	9.3	6.4	2.8	22.2	36.5	45.0	10
Finland	2018	9.1	6.8	2.2	16.0	53.4	48.7	24
South Korea	2018	8.1	4.8	3.3	17.0	31.5	43.4	10
Taiwan	2018	6.1	3.9	2.2	29.8	16.0	40.0	5
<b>Hong Kong</b>	<b>2018/19</b>	<b>5.9</b>	<b>3.0</b>	<b>3.0</b>	<b>21.9</b>	<b>20.1</b>	<b>17.0</b>	<b>-</b>
The mainland of China	2017	5.2	2.9	2.2	16.5	32.2	45.0	13
Singapore	2017	4.4	2.3	2.1	16.4	17.0	22.0	7

Notes: \* Excludes employee social security contribution

# Some states in the United States do not implement sales tax

Data sources:

1. OECD.Stat website (accessed on 20 May 2020)
2. OECD Tax Database (accessed on 20 May 2020)
3. World Health Organization's Global Health Expenditure Database (accessed on 21 May 2020)
4. Hong Kong's Domestic Health Accounts: Estimates of Domestic Health Expenditure, 1989/90 – 2018/19 (SHA 2011)
5. Various government sources in the United States, Canada, Australia, Japan, the mainland of China, Taiwan, Hong Kong and Singapore

**Table 6.1 Current health expenditure by function group and financing scheme (at current market prices), 2018/19**

(HK\$ million)

	Government schemes <sup>(3)</sup>	Households out-of-pocket payment	Employer-based insurance schemes	Privately purchased insurance schemes	Enterprises financing schemes <sup>(7)</sup>	Non-profit institutions serving households financing schemes	Current health expenditure
Public inpatient <sup>(1)</sup>	41,469	1,166				-	42,635
Public specialised outpatient	18,474	2,747				-	21,221
Public primary care/general outpatient	9,549	164				4	9,717
Private inpatient <sup>(1)</sup>	4,879 <sup>(4)</sup>	10,479 <sup>(6)</sup>	5,507	4,999	223	171	26,257
Private primary care/outpatient <sup>(2)</sup>	3,100 <sup>(5)</sup>	18,489	3,891	3,532	452	202	29,666
Dental care	1,769	4,908	239	217	-	70	7,204
Medical goods	1,276	15,605	-	-	-	-	16,881
Others (including ancillary services and administration)	5,074	185	3,493	6,739	943	7	16,441
<b>Current health expenditure</b>	<b>85,590</b>	<b>83,978</b>				<b>454</b>	<b>170,022</b>

Notes: - denotes nil

- (1) Includes in-patient curative care, in-patient rehabilitative care, in-patient long-term care (health) and day curative care services.
- (2) Private out-patient includes both specialised and general out-patient.
- (3) Includes expenditure on civil servant and Hospital Authority staff medical benefit.
- (4) Includes \$4,748 million that was spent on in-patient long-term care (health).
- (5) Includes government subsidies on long-term care services, Influenza Vaccination Subsidy Scheme and Elderly Health Care Voucher Pilot Scheme.
- (6) Includes \$1,165 million that was spent on in-patient long-term care (health).
- (7) Includes medical benefit not in the form of medical insurance provided by private companies / organisations, but excludes civil servant and Hospital Authority staff medical benefit.



**Table 6.2 Current health expenditure by function and financing scheme (at current market prices), 2018/19**

(HK\$ million)

Health care function		Health care financing scheme							Current health expenditure	
		HFS.1 Government schemes	HFS.2 Voluntary health care payment schemes	HFS.2.1.1 Employer-based insurance schemes	HFS.2.1.2 Privately purchased insurance schemes	HFS.2.2 Non-profit institutions serving households financing schemes	HFS.2.3 Enterprise financing schemes	HFS.3 Household out-of-pocket payment		HFS.4 Rest of the world financing schemes
HCF.1	Curative care	58,411	19,003	9,503	8,628	266	606	34,049	-	111,463
HCF.1.1	Inpatient curative care	27,382	10,728	5,507	4,999	-	221	9,411	-	47,521
HCF.1.2	Day curative care	7,669	11	-	-	9	1	941	-	8,621
HCF.1.3	Outpatient curative care	22,498	8,265	3,997	3,628	256	384	23,696	-	54,458
HCF.1.4	Home-based curative care	862	-	-	-	-	-	2	-	864
HCF.2	Rehabilitative care	8,557	326	133	121	2	69	2,345	-	11,227
HCF.2.1	Inpatient rehabilitative care	4,456	2	-	-	2	-	97	-	4,556
HCF.2.2	Day rehabilitative care	994	-	-	-	-	-	13	-	1,007
HCF.2.3	Outpatient rehabilitative care	1,928	323	133	121	-	69	2,217	-	4,467
HCF.2.4	Home-based rehabilitative care	1,179	-	-	-	-	-	17	-	1,196
HCF.3	Long-term care (health)	7,696	159	-	-	159	-	1,249	-	9,103
HCF.4	Ancillary services	3,236	964	483	438	7	36	128	-	4,328
HCF.5	Medical goods	1,276	-	-	-	-	-	15,605	-	16,881
HCF.6	Preventive care	4,642	32	-	-	20	12	298	-	4,972
HCF.7 & HCF.9	Governance, and health system and financing administration / Other health care services not elsewhere classified	1,772	10,218	3,010	6,301	-	907	57	-	12,047
<b>Current health expenditure</b>		<b>85,590</b>	<b>30,701</b>	<b>13,130</b>	<b>15,488</b>	<b>454</b>	<b>1,630</b>	<b>53,731</b>	<b>-</b>	<b>170,022</b>

Note: - denotes nil

**Table 6.3 Current health expenditure by function and provider (at current market prices), 2018/19**

(HK\$ million)

Health care function	Health care provider																		Current health expenditure	
	HCP.1	HCP.2	HCP.3	HCP.3.1	HCP.3.2	HCP.3.3	HCP.3.4	HCP.3.5	HCP.4	HCP.5	HCP.6	HCP.7	HCP.7.1	HCP.7.2	HCP.7.3	HCP.7.9	HCP.8	HCP.9		
	Hospitals	Residential long-term care facilities	Providers of ambulatory health care	Medical practices	Dental practices	Other health care practitioners	Ambulatory health care centres	Providers of home health care services	Providers of ancillary services	Retailers and other providers of medical goods	Providers of preventive care	Providers of health care system administration and financing	Government health administration agencies	Social health insurance agencies	Private health insurance administration agencies	Other administration agencies	Rest of the economy	Rest of the world		
HCF.1	Curative care	75,777	-	34,578	26,942	6,540	-	234	864	-	-	243	-	-	-	-	-	-	865	111,463
HCF.1.1	Inpatient curative care	47,340	-	-	-	-	-	-	-	-	-	-	-	-	-	-	-	-	181	47,521
HCF.1.2	Day curative care	8,494	-	126	-	-	-	-	-	-	-	-	-	-	-	-	-	-	-	8,621
HCF.1.3	Outpatient curative care	19,943	-	33,588	26,942	6,540	-	107	-	-	-	243	-	-	-	-	-	-	684	54,458
HCF.1.4	Home-based curative care	-	-	864	-	-	-	-	864	-	-	-	-	-	-	-	-	-	-	864
HCF.2	Rehabilitative care	6,292	1,142	3,793	-	-	2,503	94	1,196	-	-	-	-	-	-	-	-	-	-	11,227
HCF.2.1	Inpatient rehabilitative care	4,421	135	-	-	-	-	-	-	-	-	-	-	-	-	-	-	-	-	4,556
HCF.2.2	Day rehabilitative care	-	1,007	-	-	-	-	-	-	-	-	-	-	-	-	-	-	-	-	1,007
HCF.2.3	Outpatient rehabilitative care	1,871	-	2,597	-	-	2,503	94	-	-	-	-	-	-	-	-	-	-	-	4,467
HCF.2.4	Home-based rehabilitative care	-	-	1,196	-	-	1	-	1,196	-	-	-	-	-	-	-	-	-	-	1,196
HCF.3	Long-term care (health)	2,123	6,072	909	-	-	-	847	62	-	-	-	-	-	-	-	-	-	-	9,103
HCF.4	Ancillary services	-	-	-	-	-	-	-	-	4,328	-	-	-	-	-	-	-	-	-	4,328
HCF.5	Medical goods	-	-	1,117	314	-	804	-	-	-	15,764	-	-	-	-	-	-	-	-	16,881
HCF.6	Preventive care	25	-	595	315	-	-	280	-	-	-	4,352	-	-	-	-	-	-	-	4,972
HCF.7 & HCF.9	Governance, and health system and financing administration / Other health care services not elsewhere classified	1,520	-	-	-	-	-	-	-	-	-	-	10,527	1,217	-	9,310	-	-	-	12,047
<b>Current health expenditure</b>		<b>85,736</b>	<b>7,214</b>	<b>40,993</b>	<b>27,571</b>	<b>6,540</b>	<b>3,307</b>	<b>1,454</b>	<b>2,121</b>	<b>4,328</b>	<b>15,764</b>	<b>4,595</b>	<b>10,527</b>	<b>1,217</b>	<b>-</b>	<b>9,310</b>	<b>-</b>	<b>-</b>	<b>865</b>	<b>170,022</b>

Note: - denotes nil

**Table 6.4 Current health expenditure by provider and financing scheme (at current market prices), 2018/19**

(HK\$ million)

Health care provider		Health care financing scheme							Current health expenditure	
		HFS.1 Government schemes	HFS.2 Voluntary health care payment schemes	HFS.2.1.1	HFS.2.1.2	HFS.2.2	HFS.2.3	HFS.3 Household out-of-pocket payment		HFS.4 Rest of the world financing schemes
				Employer-based insurance schemes	Privately purchased insurance schemes	Non-profit institutions serving households financing schemes	Enterprise financing schemes			
HCP.1	Hospitals	61,143	11,634	5,507	4,999	-	1,128	12,959	-	85,736
HCP.2	Residential long-term care facilities	5,872	161	-	-	161	-	1,180	-	7,214
HCP.3	Providers of ambulatory health care	9,189	8,604	4,130	3,749	278	446	23,200	-	40,993
HCP.3.1	Medical practices	3,480	7,729	3,757	3,411	184	377	16,362	-	27,571
HCP.3.2	Dental practices	1,550	527	239	217	70	-	4,463	-	6,540
HCP.3.3	Other health care practitioners	918	323	133	121	-	69	2,066	-	3,307
HCP.3.4	Ambulatory health care centres	1,140	25	-	-	25	-	289	-	1,454
HCP.3.5	Providers of home health care services	2,101	-	-	-	-	-	20	-	2,121
HCP.4	Providers of ancillary services	3,236	964	483	438	7	36	128	-	4,328
HCP.5	Retailers and other providers of medical goods	473	-	-	-	-	-	15,291	-	15,764
HCP.6	Providers of preventive care	4,521	19	-	-	7	12	54	-	4,595
HCP.7	Providers of health care system administration and financing	1,152	9,319	3,010	6,301	-	8	57	-	10,527
HCP.7.1	Government health administration agencies	1,152	8	-	-	-	8	57	-	1,217
HCP.7.2	Social health insurance agencies	-	-	-	-	-	-	-	-	-
HCP.7.3	Private health insurance administration agencies	-	9,310	3,010	6,301	-	-	-	-	9,310
HCP.7.9	Other administration agencies	-	-	-	-	-	-	-	-	-
HCP.8	Rest of the economy	-	-	-	-	-	-	-	-	-
HCP.9	Rest of the world	4	-	-	-	-	-	861	-	865
<b>Current health expenditure</b>		<b>85,590</b>	<b>30,701</b>	<b>13,130</b>	<b>15,488</b>	<b>454</b>	<b>1,630</b>	<b>53,731</b>	<b>-</b>	<b>170,022</b>

Note: - denotes nil