

Figure 2.1 Public, private and total health expenditure (current price), 1989/90 – 2012/13

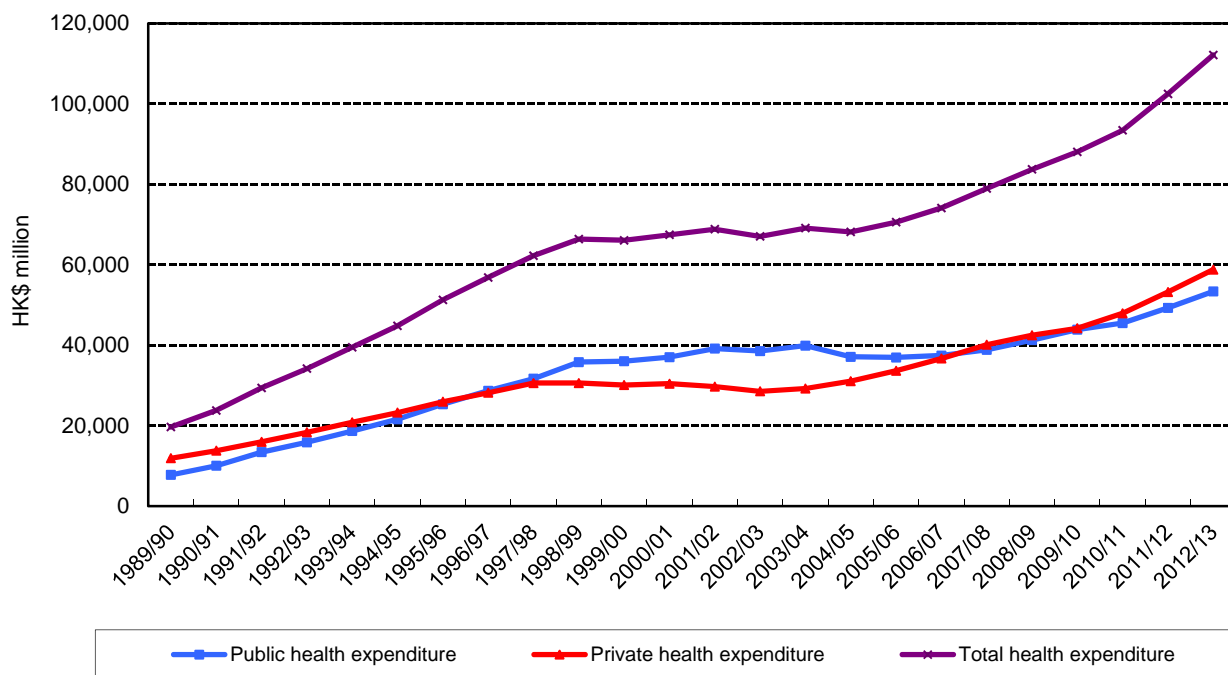


Figure 2.2 Public and private share of total health expenditure, 1989/90 – 2012/13

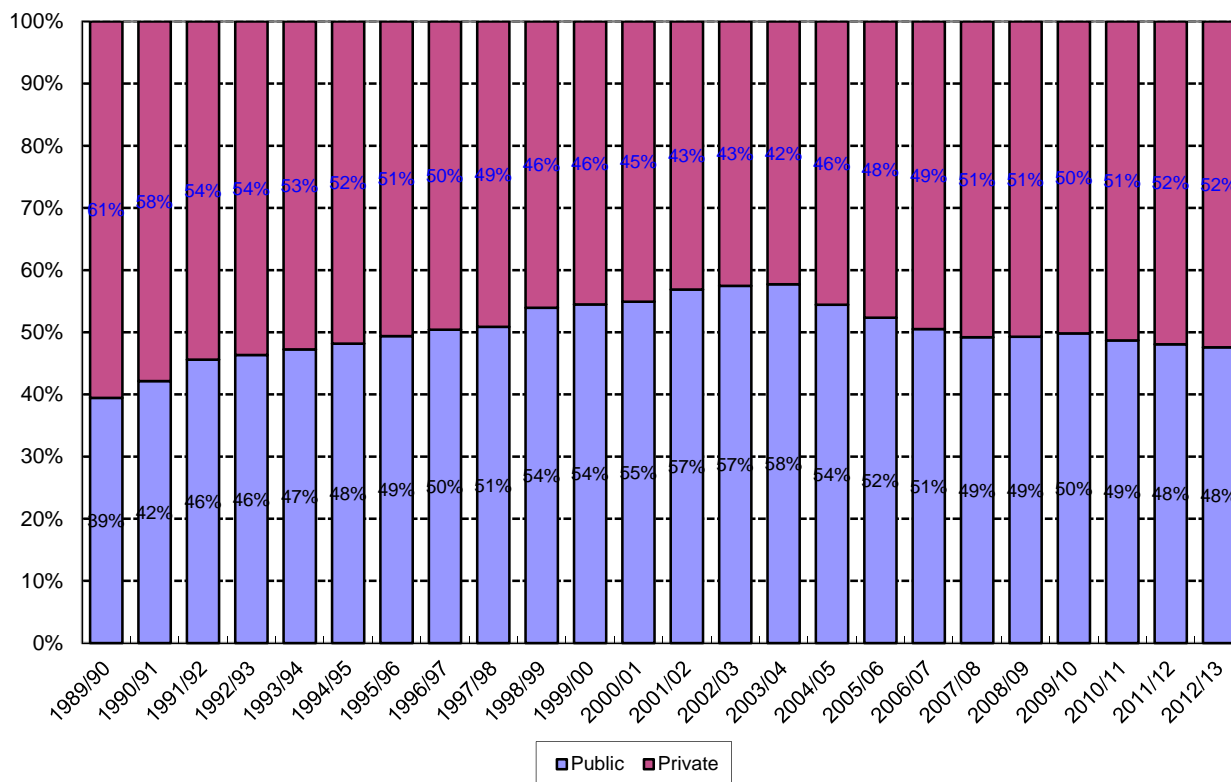


Figure 2.3 Public and private health expenditure as a percentage of GDP, 1989/90 – 2012/13

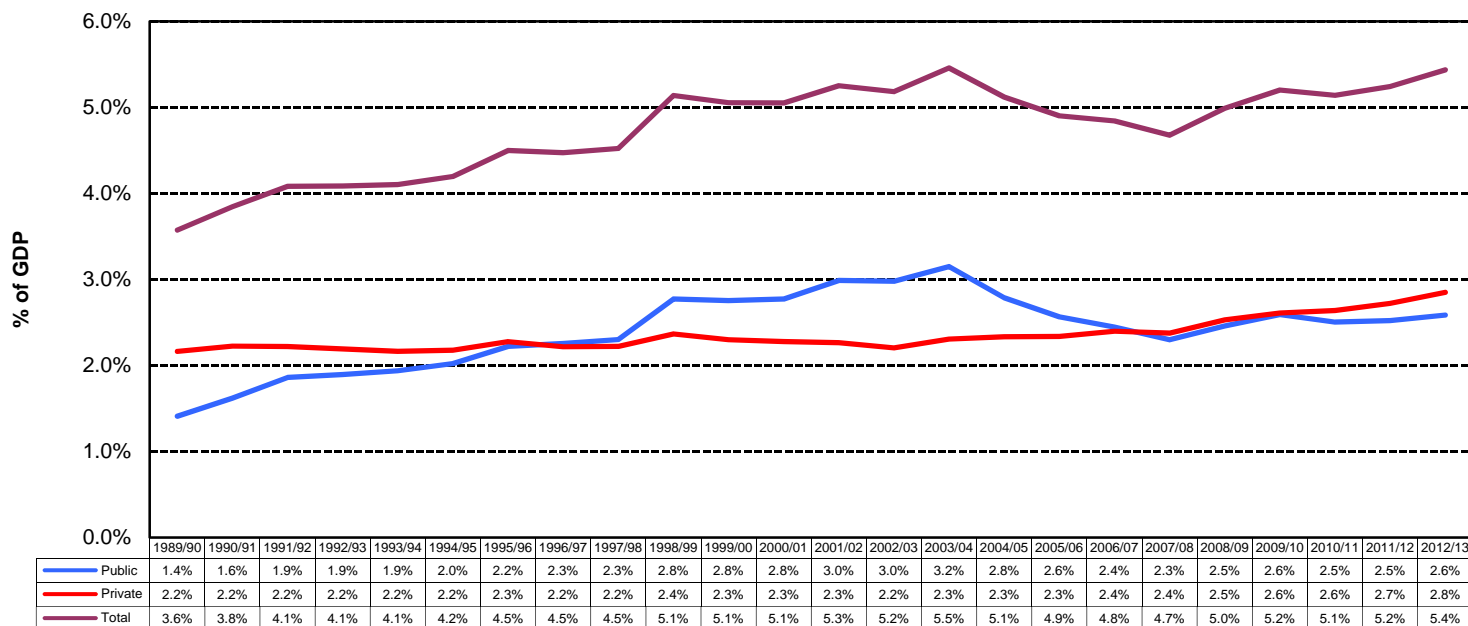


Figure 2.4 Mix of financing sources of total health expenditure, 1989/90 – 2012/13

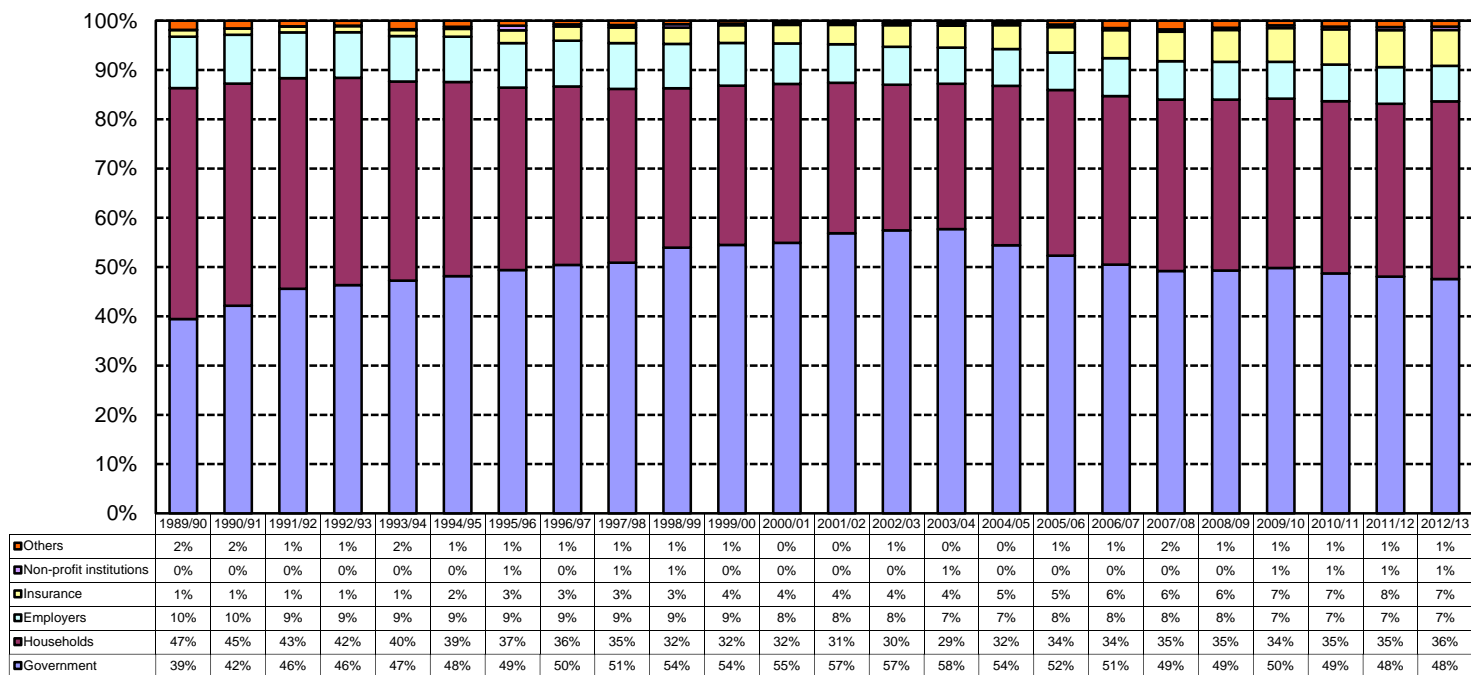


Figure 2.5 Mix of private health expenditure, 1989/90 – 2012/13

