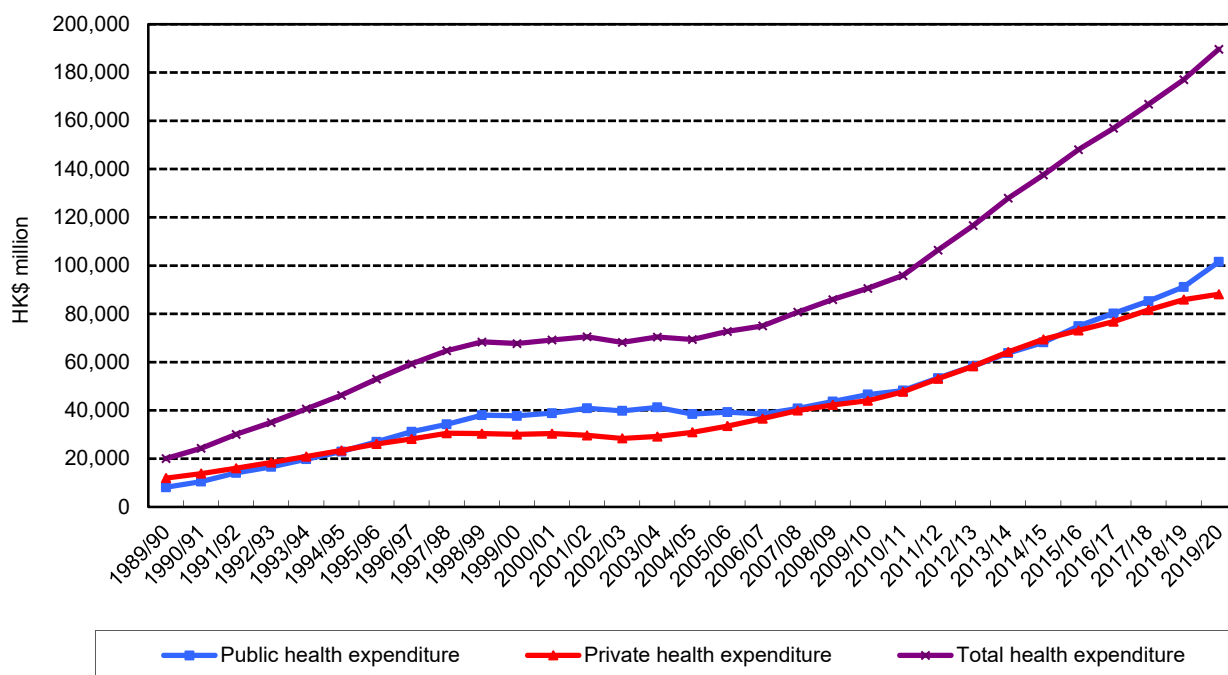
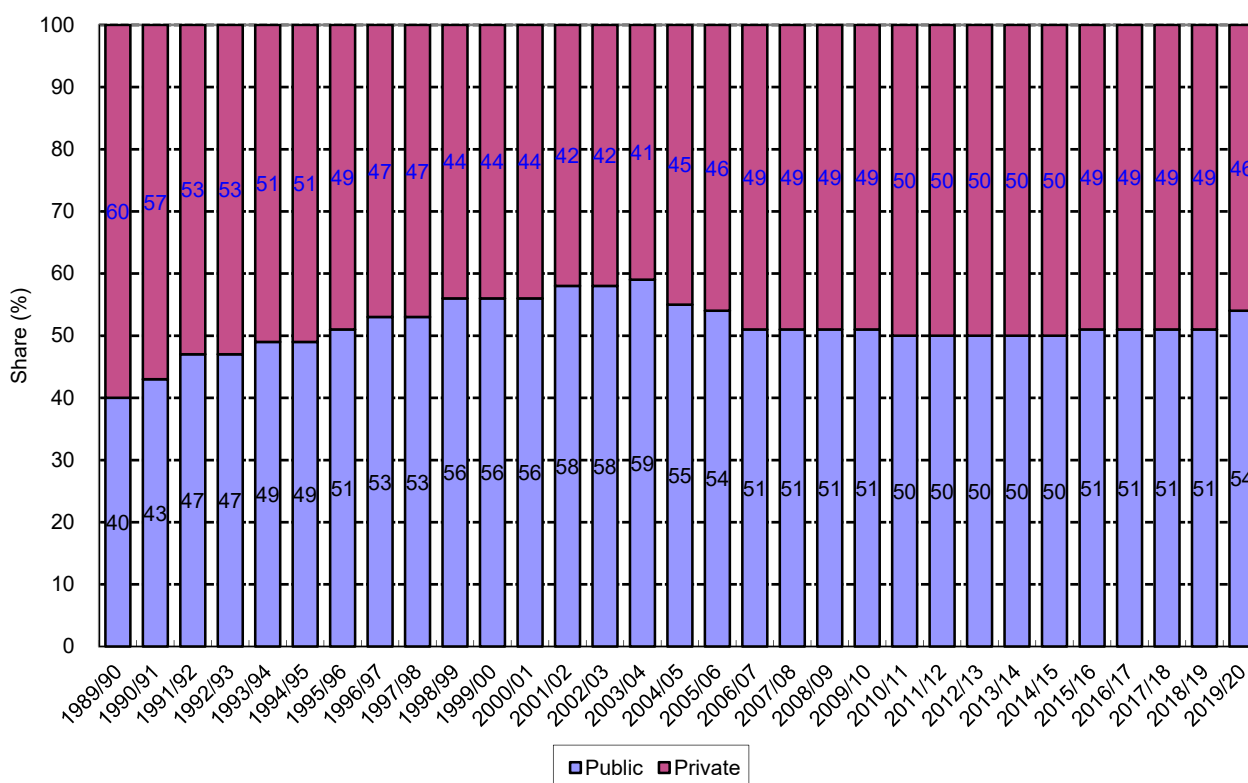


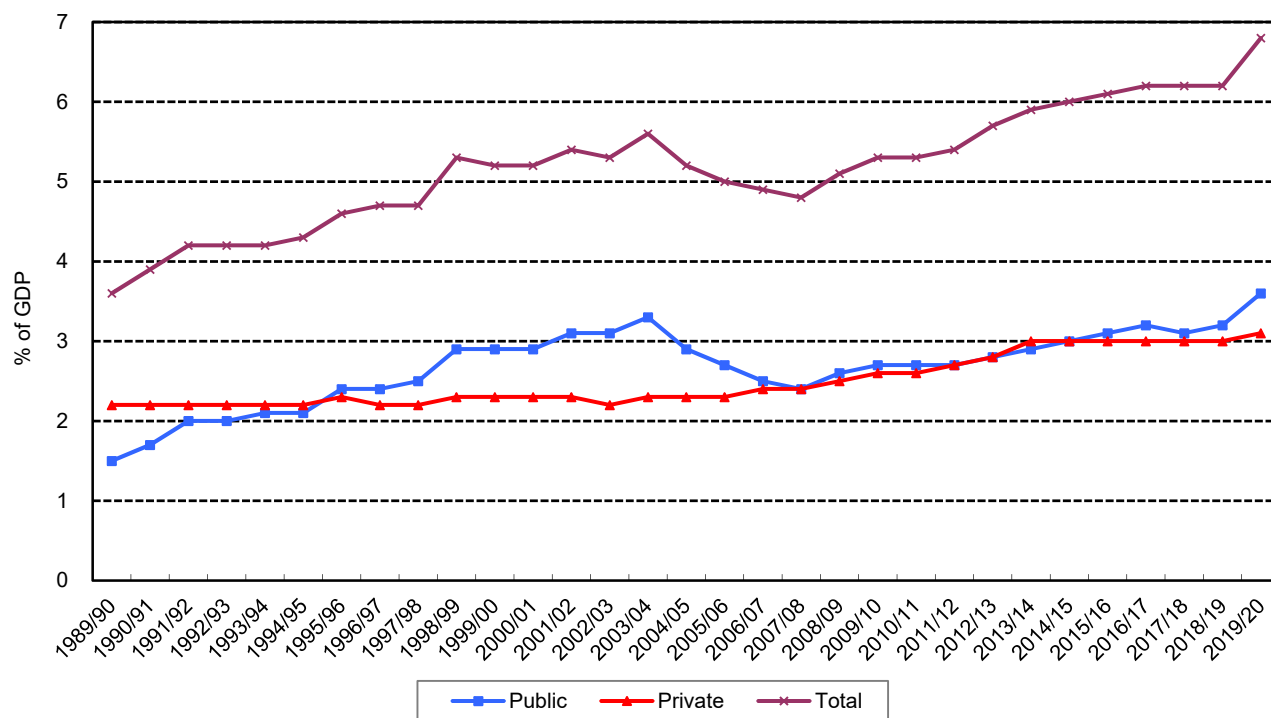
**Figure 2.1 Public, private and total health expenditure (at current market prices), 1989/90 – 2019/20**



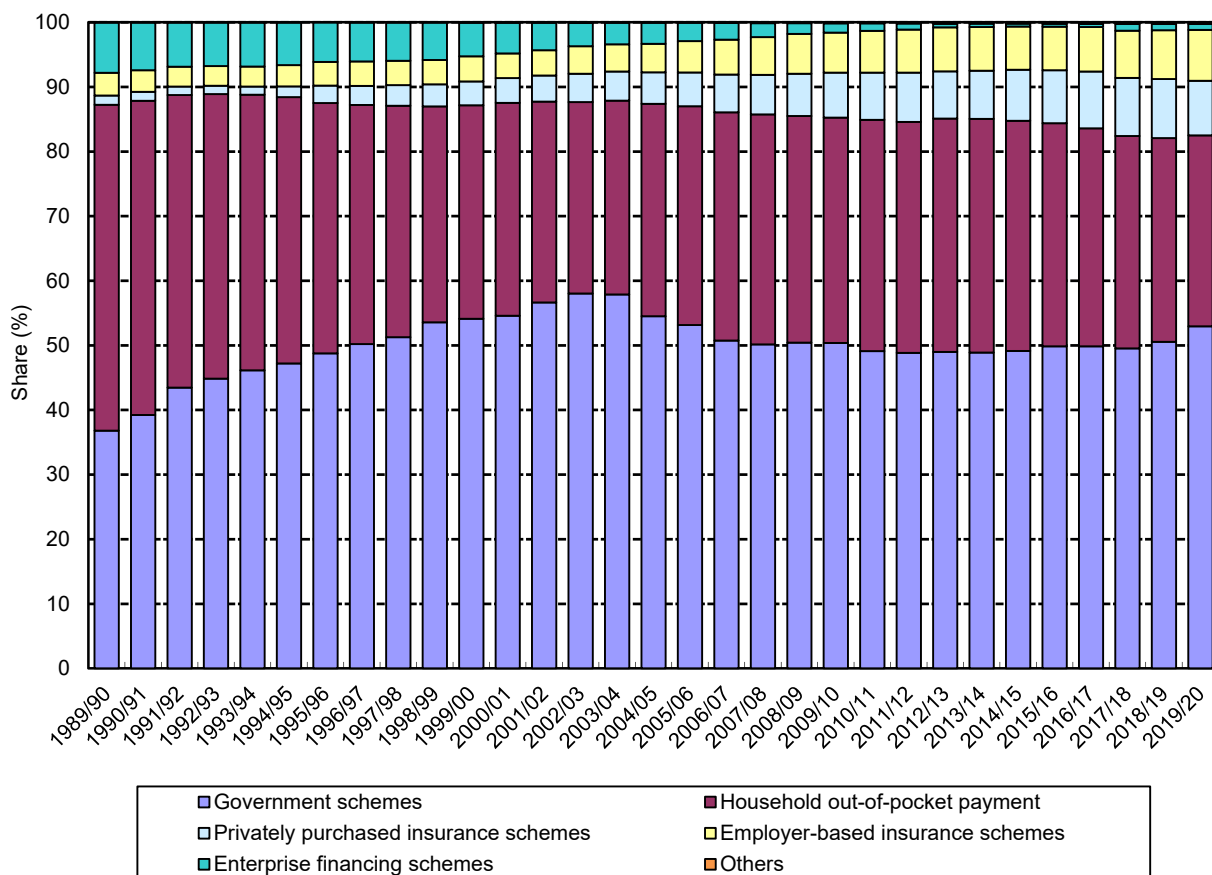
**Figure 2.2 Public and private share of total health expenditure (at current market prices), 1989/90 – 2019/20**



**Figure 2.3 Public and private total health expenditure as a percentage of GDP (at current market prices), 1989/90 – 2019/20**



**Figure 2.4 Share of current health expenditure by financing scheme (at current market prices), 1989/90 – 2019/20**



**Figure 2.5 Share of private current health expenditure by financing scheme (at current market prices), 1989/90 – 2019/20**

