

Table 2.1 Total health expenditure by public and private sectors, 1989/90 – 2018/19

Fiscal year	At Current Market Prices (HK\$ million)			At Constant 2018 Prices (HK\$ million)			Public share (%)	As a % of GDP		
	Public health expenditure	Private health expenditure	Total health expenditure	Public health expenditure	Private health expenditure	Total health expenditure		Public health expenditure	Private health expenditure	Total health expenditure
1989/90	8,106	11,918	20,024	14,571	21,422	35,993	40.5	1.5	2.2	3.6
1990/91	10,471	13,778	24,249	17,589	23,143	40,732	43.2	1.7	2.2	3.9
1991/92	14,065	16,004	30,069	21,459	24,417	45,876	46.8	2.0	2.2	4.2
1992/93	16,580	18,375	34,955	23,120	25,622	48,742	47.4	2.0	2.2	4.2
1993/94	19,756	20,841	40,598	25,519	26,921	52,440	48.7	2.1	2.2	4.2
1994/95	22,884	23,367	46,250	28,005	28,596	56,602	49.5	2.1	2.2	4.3
1995/96	26,929	26,036	52,965	31,508	30,463	61,971	50.8	2.4	2.3	4.6
1996/97	31,106	28,138	59,244	34,297	31,025	65,322	52.5	2.4	2.2	4.7
1997/98	34,210	30,488	64,697	35,878	31,975	67,853	52.9	2.5	2.2	4.7
1998/99	37,981	30,327	68,308	39,898	31,858	71,756	55.6	2.9	2.3	5.3
1999/00	37,686	29,990	67,677	41,396	32,942	74,339	55.7	2.9	2.3	5.2
2000/01	38,829	30,318	69,148	44,074	34,413	78,486	56.2	2.9	2.3	5.2
2001/02	40,879	29,607	70,486	47,243	34,216	81,459	58.0	3.1	2.3	5.4
2002/03	39,791	28,382	68,172	47,865	34,141	82,006	58.4	3.1	2.2	5.3
2003/04	41,248	29,116	70,364	52,743	37,229	89,972	58.6	3.3	2.3	5.6
2004/05	38,461	30,888	69,349	50,665	40,688	91,353	55.5	2.9	2.3	5.2
2005/06	39,233	33,468	72,702	51,609	44,026	95,635	54.0	2.7	2.3	5.0
2006/07	38,446	36,554	75,000	50,589	48,099	98,688	51.3	2.5	2.4	4.9
2007/08	40,762	39,916	80,678	51,899	50,822	102,721	50.5	2.4	2.4	4.8
2008/09	43,656	42,239	85,895	55,089	53,302	108,391	50.8	2.6	2.5	5.1
2009/10	46,544	43,991	90,535	58,962	55,727	114,688	51.4	2.7	2.6	5.3
2010/11	48,197	47,661	95,858	60,704	60,029	120,733	50.3	2.7	2.6	5.3
2011/12	53,330	53,062	106,392	64,416	64,093	128,509	50.1	2.7	2.7	5.4
2012/13	58,323	58,310	116,633	68,308	68,293	136,600	50.0	2.8	2.8	5.7
2013/14	63,708	64,221	127,929	73,238	73,828	147,066	49.8	2.9	3.0	5.9
2014/15	68,060	69,448	137,508	75,682	77,226	152,907	49.5	3.0	3.0	6.0
2015/16	74,821	73,175	147,996	80,707	78,931	159,638	50.6	3.1	3.0	6.1
2016/17	80,098	76,821	156,918	84,940	81,465	166,405	51.0	3.2	3.0	6.2
2017/18	85,202	81,687	166,889	87,533	83,923	171,456	51.1	3.1	3.0	6.2
2018/19	91,083	86,364	177,447	90,490	85,801	176,291	51.3	3.2	3.0	6.2

Table 2.2 Current health expenditure by public and private sectors, 1989/90 – 2018/19

Fiscal year	At Current Market Prices (HK\$ million)			At Constant 2018 Prices (HK\$ million)			Public share (%)	As a % of GDP		
	Public health expenditure	Private health expenditure	Current health expenditure	Public health expenditure	Private health expenditure	Current health expenditure		Public health expenditure	Private health expenditure	Current health expenditure
1989/90	6,734	11,570	18,303	12,104	20,797	32,900	36.8	1.2	2.1	3.3
1990/91	8,669	13,435	22,105	14,562	22,567	37,130	39.2	1.4	2.2	3.6
1991/92	12,076	15,709	27,785	18,424	23,966	42,390	43.5	1.7	2.2	3.9
1992/93	14,673	18,040	32,713	20,460	25,155	45,615	44.9	1.8	2.2	3.9
1993/94	17,269	20,163	37,433	22,307	26,045	48,352	46.1	1.8	2.1	3.9
1994/95	20,304	22,708	43,011	24,848	27,790	52,638	47.2	1.9	2.1	4.0
1995/96	23,929	25,142	49,072	27,998	29,417	57,415	48.8	2.1	2.2	4.3
1996/97	27,917	27,709	55,626	30,781	30,551	61,333	50.2	2.2	2.2	4.4
1997/98	31,440	29,907	61,347	32,973	31,366	64,339	51.2	2.3	2.2	4.5
1998/99	34,388	29,822	64,210	36,124	31,328	67,451	53.6	2.7	2.3	5.0
1999/00	34,944	29,653	64,596	38,384	32,572	70,955	54.1	2.7	2.3	4.9
2000/01	36,066	30,018	66,084	40,937	34,072	75,009	54.6	2.7	2.2	4.9
2001/02	38,240	29,298	67,539	44,194	33,860	78,054	56.6	2.9	2.2	5.2
2002/03	38,781	28,071	66,852	46,651	33,767	80,418	58.0	3.0	2.2	5.2
2003/04	39,381	28,662	68,043	50,356	36,650	87,005	57.9	3.1	2.3	5.4
2004/05	36,580	30,524	67,104	48,186	40,209	88,395	54.5	2.7	2.3	5.0
2005/06	37,225	32,837	70,062	48,968	43,195	92,163	53.1	2.6	2.3	4.9
2006/07	36,457	35,402	71,859	47,972	46,584	94,556	50.7	2.4	2.3	4.7
2007/08	38,697	38,459	77,156	49,270	48,968	98,237	50.2	2.3	2.3	4.6
2008/09	41,717	41,023	82,739	52,642	51,767	104,409	50.4	2.5	2.4	4.9
2009/10	43,736	43,107	86,843	55,404	54,608	110,012	50.4	2.6	2.5	5.1
2010/11	44,904	46,527	91,432	56,557	58,601	115,158	49.1	2.5	2.6	5.0
2011/12	49,333	51,701	101,034	59,588	62,449	122,038	48.8	2.5	2.6	5.2
2012/13	54,591	56,936	111,527	63,937	66,683	130,621	48.9	2.6	2.8	5.4
2013/14	59,257	62,008	121,265	68,121	71,284	139,405	48.9	2.7	2.9	5.6
2014/15	64,174	66,600	130,774	71,361	74,059	145,420	49.1	2.8	2.9	5.7
2015/16	70,132	70,701	140,833	75,649	76,263	151,912	49.8	2.9	2.9	5.8
2016/17	73,565	74,120	147,686	78,013	78,601	156,614	49.8	2.9	2.9	5.8
2017/18	77,700	79,327	157,026	79,826	81,497	161,324	49.5	2.9	2.9	5.8
2018/19	85,586	84,436	170,022	85,028	83,886	168,914	50.3	3.0	3.0	5.9

Table 2.3 Current health expenditure by financing scheme (at current market prices), 1989/90 – 2018/19

Fiscal year	Public		Private															Current health expenditure				
	Government schemes		Employer-based insurance schemes			Privately purchased insurance schemes			Non-profit institutions serving households financing schemes			Enterprise financing schemes			Household out-of-pocket payment					Rest of the world financing schemes		
	HK\$ million	(%)	HK\$ million	(%)	[%]	HK\$ million	(%)	[%]	HK\$ million	(%)	[%]	HK\$ million	(%)	[%]	HK\$ million	(%)	[%]	HK\$ million	(%)	[%]	HK\$ million	(%)
1989/90	6,734	(36.8)	645	(3.5)	[5.6]	263	(1.4)	[2.3]	8	(*)	[0.1]	1,423	(7.8)	[12.3]	9,231	(50.4)	[79.8]	1	(*)	[*]	18,303	(100.0)
1990/91	8,669	(39.2)	738	(3.3)	[5.5]	306	(1.4)	[2.3]	8	(*)	[0.1]	1,635	(7.4)	[12.2]	10,747	(48.6)	[80.0]	#	(*)	[*]	22,105	(100.0)
1991/92	12,076	(43.5)	857	(3.1)	[5.5]	361	(1.3)	[2.3]	11	(*)	[0.1]	1,899	(6.8)	[12.1]	12,580	(45.3)	[80.1]	1	(*)	[*]	27,785	(100.0)
1992/93	14,673	(44.9)	996	(3.0)	[5.5]	418	(1.3)	[2.3]	12	(*)	[0.1]	2,211	(6.8)	[12.3]	14,402	(44.0)	[79.8]	1	(*)	[*]	32,713	(100.0)
1993/94	17,269	(46.1)	1,159	(3.1)	[5.7]	480	(1.3)	[2.4]	12	(*)	[0.1]	2,549	(6.8)	[12.6]	15,961	(42.6)	[79.2]	2	(*)	[*]	37,433	(100.0)
1994/95	20,304	(47.2)	1,407	(3.3)	[6.2]	716	(1.7)	[3.2]	15	(*)	[0.1]	2,844	(6.6)	[12.5]	17,725	(41.2)	[78.1]	1	(*)	[*]	43,011	(100.0)
1995/96	23,929	(48.8)	1,792	(3.7)	[7.1]	1,336	(2.7)	[5.3]	16	(*)	[0.1]	2,999	(6.1)	[11.9]	18,999	(38.7)	[75.6]	#	(*)	[*]	49,072	(100.0)
1996/97	27,917	(50.2)	2,099	(3.8)	[7.6]	1,641	(2.9)	[5.9]	25	(*)	[0.1]	3,356	(6.0)	[12.1]	20,587	(37.0)	[74.3]	#	(*)	[*]	55,626	(100.0)
1997/98	31,440	(51.2)	2,311	(3.8)	[7.7]	1,961	(3.2)	[6.6]	33	(0.1)	[0.1]	3,626	(5.9)	[12.1]	21,975	(35.8)	[73.5]	#	(*)	[*]	61,347	(100.0)
1998/99	34,388	(53.6)	2,425	(3.8)	[8.1]	2,188	(3.4)	[7.3]	38	(0.1)	[0.1]	3,715	(5.8)	[12.5]	21,456	(33.4)	[71.9]	#	(*)	[*]	64,210	(100.0)
1999/00	34,944	(54.1)	2,518	(3.9)	[8.5]	2,374	(3.7)	[8.0]	43	(0.1)	[0.1]	3,365	(5.2)	[11.3]	21,353	(33.1)	[72.0]	#	(*)	[*]	64,596	(100.0)
2000/01	36,066	(54.6)	2,521	(3.8)	[8.4]	2,541	(3.8)	[8.5]	55	(0.1)	[0.2]	3,132	(4.7)	[10.4]	21,769	(32.9)	[72.5]	#	(*)	[*]	66,084	(100.0)
2001/02	38,240	(56.6)	2,645	(3.9)	[9.0]	2,721	(4.0)	[9.3]	52	(0.1)	[0.2]	2,874	(4.3)	[9.8]	21,006	(31.1)	[71.7]	#	(*)	[*]	67,539	(100.0)
2002/03	38,781	(58.0)	2,855	(4.3)	[10.2]	2,935	(4.4)	[10.5]	60	(0.1)	[0.2]	2,421	(3.6)	[8.6]	19,801	(29.6)	[70.5]	#	(*)	[*]	66,852	(100.0)
2003/04	39,381	(57.9)	2,861	(4.2)	[10.0]	3,079	(4.5)	[10.7]	46	(0.1)	[0.2]	2,275	(3.3)	[7.9]	20,401	(30.0)	[71.2]	#	(*)	[*]	68,043	(100.0)
2004/05	36,580	(54.5)	2,946	(4.4)	[9.7]	3,284	(4.9)	[10.8]	52	(0.1)	[0.2]	2,197	(3.3)	[7.2]	22,045	(32.9)	[72.2]	-	(-)	[-]	67,104	(100.0)
2005/06	37,225	(53.1)	3,391	(4.8)	[10.3]	3,663	(5.2)	[11.2]	51	(0.1)	[0.2]	2,001	(2.9)	[6.1]	23,730	(33.9)	[72.3]	#	(*)	[*]	70,062	(100.0)
2006/07	36,457	(50.7)	3,879	(5.4)	[11.0]	4,213	(5.9)	[11.9]	73	(0.1)	[0.2]	1,858	(2.6)	[5.2]	25,378	(35.3)	[71.7]	#	(*)	[*]	71,859	(100.0)
2007/08	38,697	(50.2)	4,515	(5.9)	[11.7]	4,721	(6.1)	[12.3]	107	(0.1)	[0.3]	1,668	(2.2)	[4.3]	27,447	(35.6)	[71.4]	1	(*)	[*]	77,156	(100.0)
2008/09	41,717	(50.4)	5,103	(6.2)	[12.4]	5,417	(6.5)	[13.2]	124	(0.1)	[0.3]	1,361	(1.6)	[3.3]	29,017	(35.1)	[70.7]	1	(*)	[*]	82,739	(100.0)
2009/10	43,736	(50.4)	5,392	(6.2)	[12.5]	6,041	(7.0)	[14.0]	142	(0.2)	[0.3]	1,251	(1.4)	[2.9]	30,281	(34.9)	[70.2]	#	(*)	[*]	86,843	(100.0)
2010/11	44,904	(49.1)	5,920	(6.5)	[12.7]	6,682	(7.3)	[14.4]	162	(0.2)	[0.3]	1,059	(1.2)	[2.3]	32,702	(35.8)	[70.3]	1	(*)	[*]	91,432	(100.0)
2011/12	49,335	(48.8)	6,715	(6.6)	[13.0]	7,713	(7.6)	[14.9]	194	(0.2)	[0.4]	968	(1.0)	[1.9]	36,109	(35.7)	[69.8]	1	(*)	[*]	101,034	(100.0)
2012/13	54,600	(49.0)	7,590	(6.8)	[13.3]	8,139	(7.3)	[14.3]	274	(0.2)	[0.5]	615	(0.6)	[1.1]	40,310	(36.1)	[70.8]	#	(*)	[*]	111,527	(100.0)
2013/14	59,261	(48.9)	8,203	(6.8)	[13.2]	9,058	(7.5)	[14.6]	262	(0.2)	[0.4]	625	(0.5)	[1.0]	43,855	(36.2)	[70.7]	-	(-)	[-]	121,265	(100.0)
2014/15	64,176	(49.1)	8,740	(6.7)	[13.1]	10,349	(7.9)	[15.5]	286	(0.2)	[0.4]	584	(0.4)	[0.9]	46,640	(35.7)	[70.0]	-	(-)	[-]	130,774	(100.0)
2015/16	70,139	(49.8)	9,467	(6.7)	[13.4]	11,527	(8.2)	[16.3]	352	(0.3)	[0.5]	642	(0.5)	[0.9]	48,707	(34.6)	[68.9]	-	(-)	[-]	140,833	(100.0)
2016/17	73,573	(49.8)	10,187	(6.9)	[13.7]	12,981	(8.8)	[17.5]	405	(0.3)	[0.5]	687	(0.5)	[0.9]	49,852	(33.8)	[67.3]	-	(-)	[-]	147,686	(100.0)
2017/18	77,704	(49.5)	11,545	(7.4)	[14.6]	14,121	(9.0)	[17.8]	427	(0.3)	[0.5]	1,629	(1.0)	[2.1]	51,601	(32.9)	[65.1]	-	(-)	[-]	157,026	(100.0)
2018/19	85,590	(50.3)	13,130	(7.7)	[15.6]	15,488	(9.1)	[18.3]	454	(0.3)	[0.5]	1,630	(1.0)	[1.9]	53,731	(31.6)	[63.6]	-	(-)	[-]	170,022	(100.0)

Notes: Figures in brackets denote percentage of row total
 Figures in square brackets denote share of private health expenditure
 # less than HK\$0.5 million
 * less than 0.05%
 - denotes nil

Table 2.4 Current health expenditure by financing scheme and revenue of financing scheme (at current market prices), 2018/19

(HK\$ million)

Health care financing scheme	Revenue of health care financing scheme						Current health expenditure
	Transfers from government domestic revenue	Voluntary prepayment from individuals / households	Voluntary prepayment from employers	Other revenues from households not elsewhere classified	Other revenues from corporations not elsewhere classified	Other revenues from non-profit institutions serving households not elsewhere classified	
Government schemes	85,586	-	-	-	-	4	85,590
Employer-based insurance schemes	-	-	13,130	-	-	-	13,130
Privately purchased insurance schemes	-	15,488	-	-	-	-	15,488
Non-profit institutions serving households financing schemes	-	-	-	-	-	454	454
Enterprise financing schemes	-	-	-	-	1,630	-	1,630
Household out-of-pocket payment	-	-	-	53,731	-	-	53,731
Current health expenditure	85,586	15,488	13,130	53,731	1,630	458	170,022

Note: - denotes nil

Figure 2.1 Public, private and total health expenditure (at current market prices), 1989/90 – 2018/19

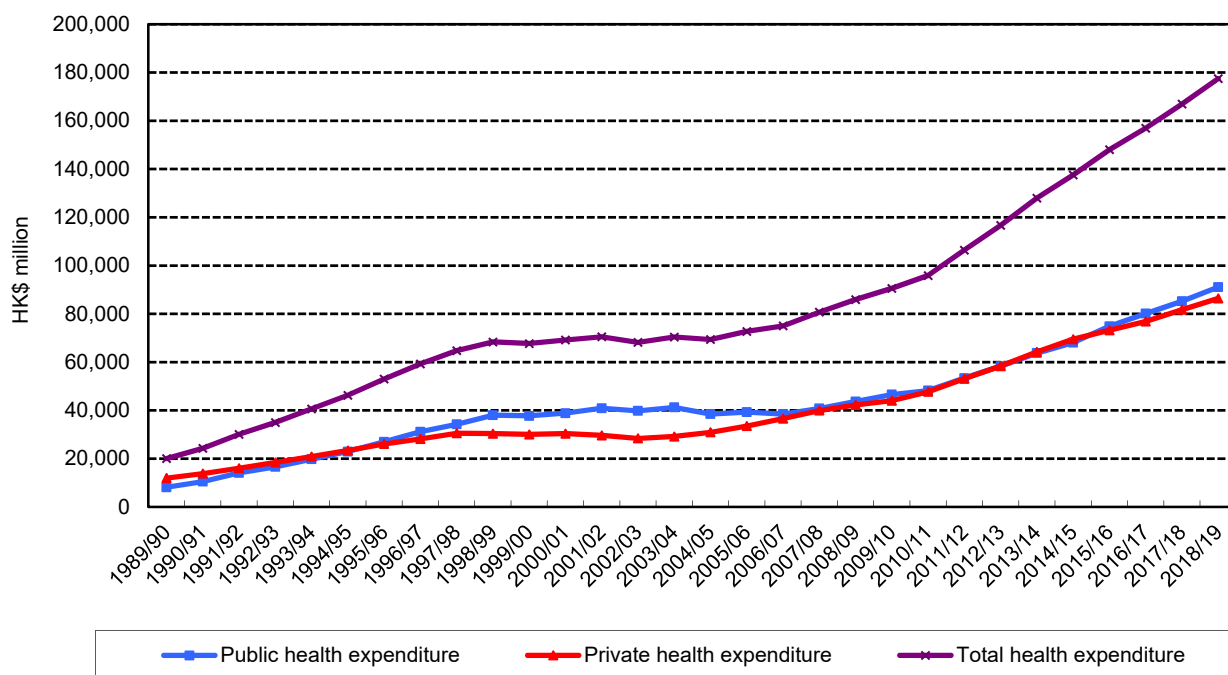


Figure 2.2 Public and private share of total health expenditure (at current market prices), 1989/90 – 2018/19

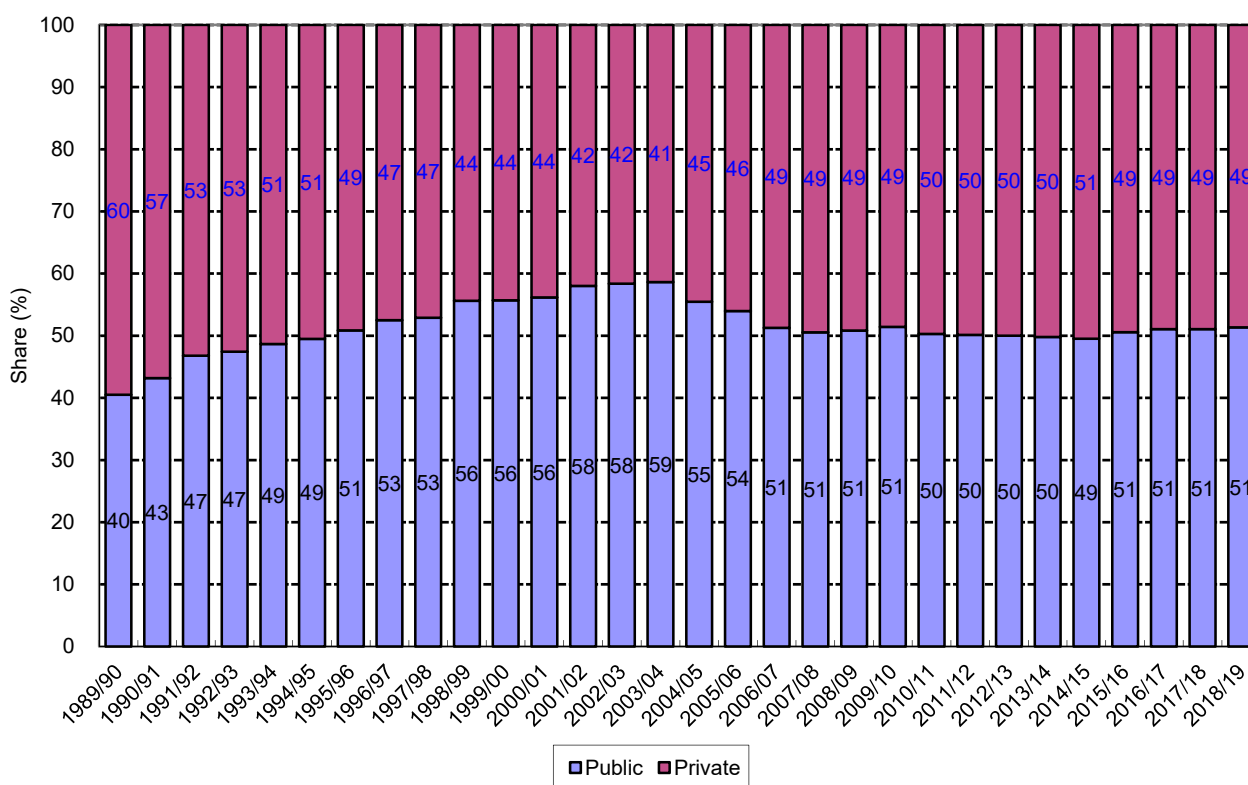


Figure 2.3 Public and private total health expenditure as a percentage of GDP (at current market prices), 1989/90 – 2018/19

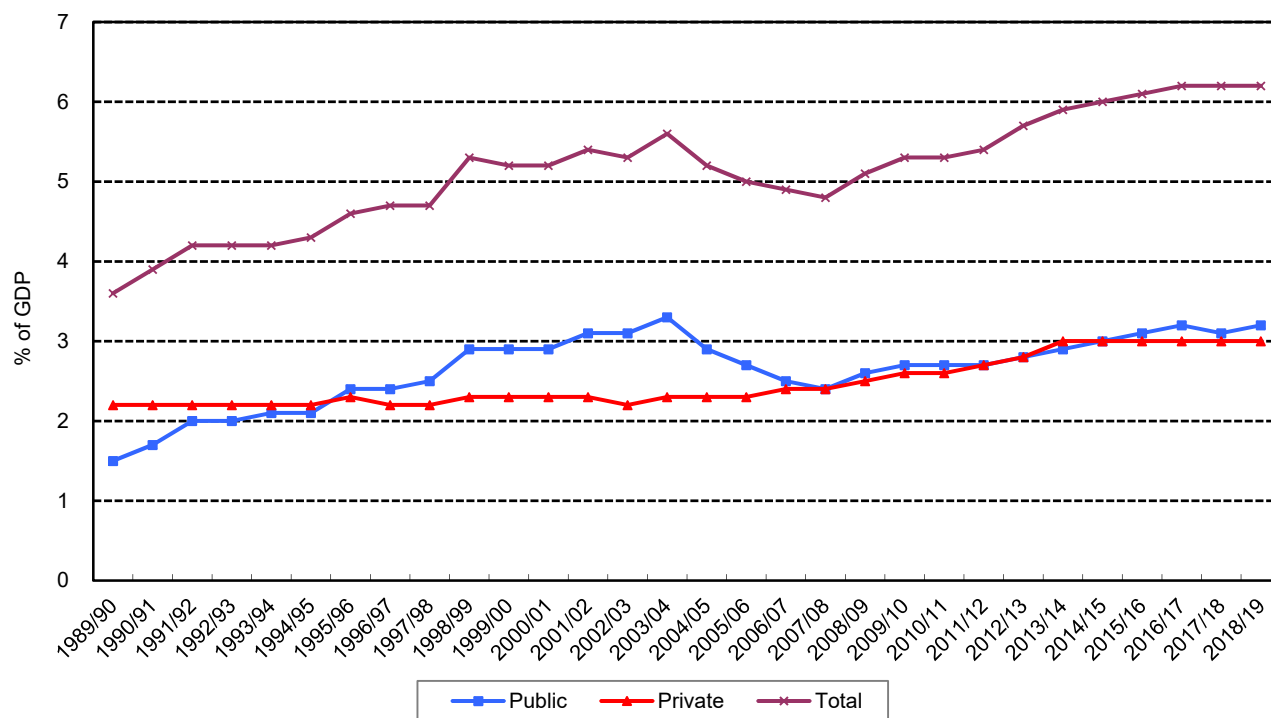


Figure 2.4 Share of current health expenditure by financing scheme (at current market prices), 1989/90 – 2018/19

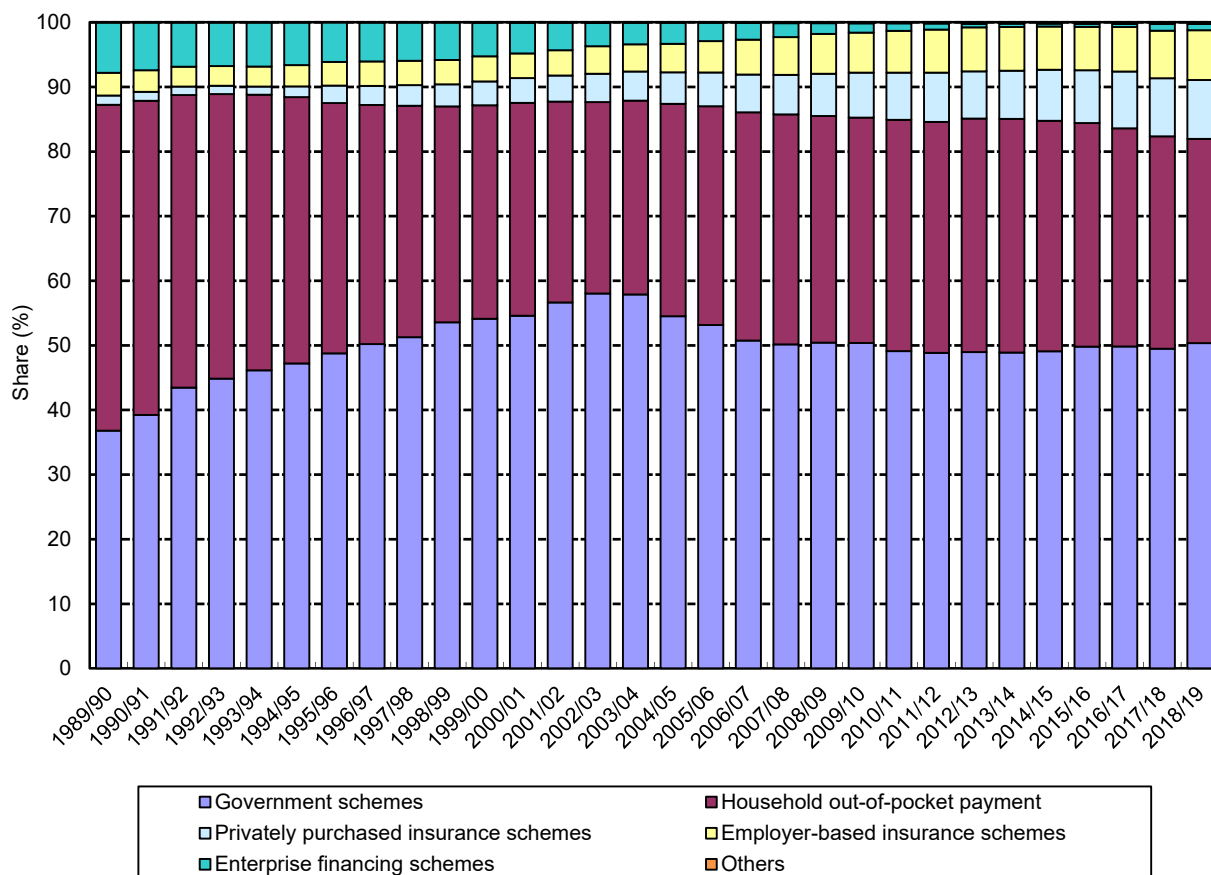


Figure 2.5 Share of private current health expenditure by financing scheme (at current market prices), 1989/90 – 2018/19

